

# INITIAL STRUCTURAL STABILITY ASSESSMENT

**40 CFR 257.73 (d)**

Ash Pond

Cabin Creek Site

Chelyan, WV

May, 2026

Prepared for: Appalachian Power Company

Prepared by: American Electric Power Service Corporation

1 Riverside Plaza

Columbus, OH 43215



Cabin Creek Site

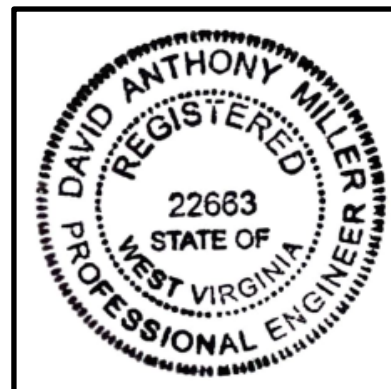
Ash Pond

# Initial Structural Stability Assessment

PREPARED BY \_\_\_\_\_ DATE \_\_\_\_\_  
Dan Murphy, P.E.

REVIEWED BY \_\_\_\_\_ DATE \_\_\_\_\_  
Blake Arthur, P.E.

APPROVED BY David Anthony Miller DATE 05.04.2026  
David Anthony Miller, P.E.  
Director- Ash Management Services



I certify to the best of my knowledge, information, and belief that the information contained in this structural stability assessment meets the requirements of 40 CFR § 257.73(d)

## Table of CONTENTS

<b>1.0 OBJECTIVE.....</b>	<b>4</b>
<b>2.0 DESCRIPTION OF THE CCR UNIT.....</b>	<b>4</b>
<b>3.0 STRUCTURAL STABILITY ASSESSMENT 257.73(d).....</b>	<b>5</b>

### **Attachment A: Initial Structural Stability Assessment Report**

## **1.0 OBJECTIVE**

The “Hazardous and Solid Waste Management System: Disposal of Coal Combustion Residuals From Electric Utilities; Legacy CCR Surface Impoundments”, 89 Fed. Reg. 38950 (May 8, 2024) (amending 40 C.F.R. §257) requires owners and operators of facilities with a legacy coal combustion residual (CCR) surface impoundment to prepare an initial structural stability assessment document for each legacy CCR surface impoundment at the facility.

The Ash Pond at the Cabin Creek Site is subjected to this rule.

## **2.0 DESCRIPTION OF THE CCR UNIT**

The Cabin Creek site is located near Chelyan, West Virginia, near the intersection of MacCorkle Ave SE and Cabin Creek Rd., Cabin Creek, WV 25035. The latitude/longitude of the facility is: 38°11'52"N / 81°29' 6" W. The Ash Pond is approximately 19 acres. The Cabin Creek Power Plant was placed in service in 1914, stopped generating electricity in 1977, retired in 1981 and the site was razed in 1985-1987. The Ash Pond was constructed sometime around 1956.

The Ash Pond is located near the Kanawha River on the west side of the plant property. The Ash Pond was located on the west side of Cabin Creek, and the Power Plant was located on the East side of Cabin Creek.

According to the 1956 U.S. Army Corps Permit application, the ash pond was constructed by building a dike around Cabin Creek Island and filling the former river backchannel with dredged river sediments. To offset the loss of channel volume, approximately 200,000 cubic yards of compensatory dredging was completed adjacent to the Cabin Creek Island within the main river channel. The dike included a 650-foot-long southwest section reinforced with 35-foot-deep wood piling and rockfill, and a similarly long northeast section protecting the shoreline with riprap armor. The exterior slope of the dike was designed at 2H:1V and the interior slope was designed at 1.5H:1V. The 2H:1V slope extends below the navigational pool of the Marmet Lock and Dam (590 ft-msl) to an elevation of 575 ft-msl, 15 below the normal pool.

The former discharge structure is a pipe and riser type structure located at the western end of the Ash Pond. The riser structure is made of concrete and has grooves for receiving stop logs for controlling the pool level when the pond was active. The outlet pipe is a 24-inch-diameter reinforced concrete pipe. The discharge structure no longer functions, and the facility no longer impounds water.

### **3.0 STRUCTURAL STABILITY ASSESSMENT 257.73(d)**

The Initial Structural Stability Assessment was prepared by WSP USA, Inc. and is included as Attachment A.

Available records for the Cabin Creek Ash Pond indicate timber piling was installed along the normal pool of the Kanawha River for at least a partition of the dikes length. Remnants of the timber pile system were observed during previous annual inspections. The timber pile system provides additional resistance to slope failure along the critical failure section of the perimeter dike.

Based on the findings and general assessment in the Initial Structural Stability Assessment, the Cabin Creek Ash Pond requires corrective action to address dense vegetation on the slopes. The storm sewer passing under the limits of the Ash Pond needs to be cleaned out and reinspected.

A revised Structural Stability Assessment will be issued upon completing the additional inspections and completion of recommended corrective actions.

**ATTACHMENT A**

**Initial Structural Stability Assessment Report**



**REPORT**

# Initial Structural Stability Assessment

Cabin Creek Ash Pond, Former Cabin Creek Power Plant, Cabin Creek, West Virginia

Submitted to:

**Ms. Jane Petrie**

American Electric Power Company, Inc.  
Project Manager  
1 Riverside Plaza,  
Columbus, OH 43215

Submitted by:

**WSP USA Inc.**

3348 Peachtree Road NE, Suite 1100, Atlanta, Georgia, 30326

+1 404 237 2115

US0041868.3924

April 28, 2026



# Distribution List

Dan Murphy (dsmurphy1@aep.com)

Benjamin J Hackett (bjhackett@aep.com)

# Table of Contents

**1 INTRODUCTION ..... 1**

**2 BACKGROUND ..... 1**

**3 SITE VISIT ..... 2**

**4 STRUCTURAL STABILITY ASSESSEMENT [CFR 40 257.73(D)(I)-(VII)] ..... 3**

4.1 Foundations and Abutments [CFR 40 257.73(d)(1)(i)] ..... 3

4.2 Slope Protection [CFR 40 257.73(d)(1)(ii)] ..... 4

4.3 Dikes (Embankment) [CFR 40 257.73(d)(1)(iii)] ..... 4

4.4 Vegetated Slopes [CFR 40 257.73(d)(1)(iv)] ..... 5

4.5 Spillways [CFR 40 257.73(d)(1)(v)] ..... 5

4.6 Hydraulic Structures [CFR 40 257.73(d)(1)(vi)] ..... 5

4.7 Downstream Slopes Adjacent to Water Body [CFR 40 257.73(d)(1)(vii)] ..... 5

**5 STRUCTURAL STABILITY DEFICIENCIES [CFR 40 257.73(D)(II)] ..... 6**

## FIGURES

Figure 1: Site Location Plan ..... 9

Figure 2: Site Topographic Map ..... 10

## APPENDICES

### APPENDIX A

Historical Drawings

### APPENDIX B

Site Reconnaissance Photo Log

# CERTIFICATION

Professional Engineer Certification Statement [40 CFR §257.73(d)]

I hereby certify that, having reviewed the attached documentation and being familiar with the provisions of Title 40 of the Code of Federal Regulations Section §257.73 (40 CFR Part §257.73(d)), I attest that this Structural Stability Assessment is accurate and has been prepared in accordance with good engineering practices, including the consideration of applicable industry standards, and with the requirements of 40 CFR Part §257.73(d) periodic structural stability assessments.

**WSP USA Inc.**



\_\_\_\_\_  
Signature

\_\_\_\_\_  
April 28, 2026

Date of Report Certification

\_\_\_\_\_  
Steven J. Moeller, PE (AL, GA, NC, SC, TN, WV)

Name

\_\_\_\_\_  
27354

Professional Engineering Certification Number



## 1 INTRODUCTION

WSP USA Inc. (WSP) was retained by Appalachian Power Company, a subsidiary of American Electric Power Company, Inc. (AEP), to perform this initial Structural Stability Assessment for the Cabin Creek Ash Pond, an inactive Coal Combustion Residuals (CCR) surface impoundment. This assessment has been prepared in accordance with the requirements of 40 CFR Part §257, Subpart D, specifically §257.73(d).

The Former Cabin Creek Power Station (Plant), owned and operated by the Appalachian Power Company, is located along West Virginia State Route 61, adjacent to the Kanawha River (Figure 1). Cabin Creek is located between the former Plant and the ash pond and discharges into the Kanawha River, as shown in Figure 2. Operations at the Plant began in 1914 and ceased in 1977. The Plant and associated structures were demolished in 1981, and the ash pond was closed in compliance with applicable state regulations at that time. The ash pond covers approximately 19 acres and is surrounded by commercial and residential properties.

For this initial assessment, WSP performed a site visit on July 16, 2025, to observe current site conditions.

## 2 BACKGROUND

The former Cabin Creek Power Station utilized a single surface impoundment, the Cabin Creek Ash Pond, to manage sluiced ash. This impoundment is located west of Cabin Creek and is classified as a legacy CCR impoundment under the United States Environmental Protection Agency's (USEPA) Legacy CCR Final Rule (May 28, 2024), which established regulatory requirements for legacy CCR surface impoundments and CCR management units.

The Cabin Creek Ash Pond is an inactive impoundment, which no longer impounds surface water, surrounded by an earthen berm that ranges in height from approximately 590 to 620 feet Mean Sea Level (MSL). The thickness of the ash within the bermed area ranges between approximately 5 and 33 feet. Only limited design and construction drawings are available, primarily from a Corps of Engineers permit application from the 1950s (Appendix A).

The ash pond was constructed in the 1950s by dredging alluvial materials and sediments from the Kanawha River north of Cabin Creek Island and placing the dredged materials in the back channel on the southern side of the island. Historical drawings and boring logs indicate that these dredged materials were used to construct the perimeter dike to an approximate elevation of 605 feet MSL. Original drawings show a wooden pile retaining wall along a portion of the northern dike adjacent to the Kanawha River. Initial field observations (Appendix B) indicate that the north side of the pilings has filled in with sediments, and the top of the wall no longer projects above the river. During the annual inspection of the ash pond performed in September 2025, AEP located remnants of these wooden piles along the shoreline of the ash pond's northern dike. The images 1a and 1b (shown below) were taken in the western portion of the ash pond's northern dike and show the piles at the approximate locations depicted in the 1950 drawings (Appendix A).



Image 1a



Image 1b

Images 1a and 1b: Wood piles along the shoreline in the western half of the ash pond's northern dike

The Cabin Creek Ash Pond received CCR material from the former Plant between approximately 1958 and 1977, after which it ceased operation. During its active period, bottom ash and fly ash were sluiced into the pond, and water levels were controlled via an outfall structure located on the western end that conveyed stormwater to the Kanawha River. Based on a review of the embankment boring logs, it appears that the perimeter dike was raised at least twice to its current elevation of approximately 620 feet MSL. Initially, CCR materials were used to raise the height of the perimeter dike, followed by the use of a CCR and soil mixture to construct the uppermost section of the dike.

Prior to 2025, the Cabin Creek Ash Pond was overgrown with vegetation and trees. In April and May 2025, AEP cleared vegetation from the top of the ash pond in preparation for subsequent investigations.

### 3 Site Visit

WSP conducted a site visit to the Cabin Creek Ash Pond on July 16, 2025, to observe current site conditions, verify proposed boring locations, evaluate site accessibility for drilling equipment, and identify any logistical constraints. Mr. Steven Moeller and Mr. Naveen Kumar Ganji conducted the site visit on behalf of WSP. WSP personnel performed the following:

- Observed site conditions related to the structural stability of the impoundment, including berms, dikes, erosion protection, vegetation, slopes, stormwater drainage features, etc.

- Reviewed site access routes, working areas, and potential safety hazards
- Confirmed proposed boring locations and access to these locations
- Photographed site features (Appendix B)

During the site reconnaissance, the site observations were limited to features and structures that could be visually observed at the ground surface, and did not include invasive inspection, investigation, or exploration of the site, embankments, or structures. WSP noted the following observations at the site:

- The top of the former impoundment was recently cleared of trees and vegetation
- The principal spillway structure for the former impoundment was not properly abandoned and had been filled with soil and organic materials
- Several pipelines and manholes are located within the limits of the Cabin Creek Ash Pond, primarily related to routing stormwater around the ash pond
- The northern slope of the ash pond along the Kanawha River and the northeastern slope are heavily wooded with trees and vegetation, making it difficult to inspect
- Uprooted fallen trees were observed at the crest of the northern slope of the ash pond along the Kanawha River
- Due to the heavy vegetation observed on the exterior dike slopes, only limited areas of erosion were observed

## **4 STRUCTURAL STABILITY ASSESSMENT [CFR 40 §257.73(d)(1)(i)-(vii)]**

The CCR Rule requires an initial structural stability assessment to be conducted by a qualified professional engineer to document whether the design, construction, operation, and maintenance are consistent with recognized and generally accepted good engineering practices for the maximum volume of CCR and CCR wastewater that can be impounded therein. The following sections provide documentation of the initial structural stability assessment and rely mainly on the recent site inspection performed at the site. The most recent inspection was completed by WSP in July 2025, specifically to assess the structural stability of the ash pond.

### **4.1 Foundations and Abutments [CFR 40 §257.73(d)(1)(i)]**

*CCR unit has been designed, constructed, operated, and maintained with stable foundations and abutments.*

The stability of the foundations and abutments was evaluated by observing the legacy CCR impoundment and using soil data from field investigations performed at the site to assess the stability of the dike and foundations. There has been no indication of foundational or abutment instability or movement in the recent site inspection.

The alluvium consists primarily of silt, silty clay, and lean clays with varying amounts of sand, gravel, and mica. Field standard penetration tests (SPT) N-values recorded in the alluvial soils ranged from Weight of Hammer (WOH) over 18 inches to 17 blows per foot (bpf), indicating very soft to very stiff consistency. Laboratory tests conducted on the alluvial soils indicate in situ moisture contents ranging from 19.7% to 29%.

Atterberg Limits testing performed on samples of the alluvial soils resulted in Liquid Limits ranging from NP (Non-Plastic) to 23% and Plasticity Indices ranging from NP to 5%. Gradation testing performed on these samples showed 19.8% to 67.8% material passing the No. 200 sieve.

At the time of this report, a factor of safety assessment of the Cabin Creek Ash Pond had been postponed, while an on-going investigation of the existing pile system along the northern slope of the ash pond adjacent to the Kanawha River was being performed. The pile system, if intact, provides additional resistance to slope failure along the potential critical failure sections on the north side of the perimeter dike. Upon completion of the pile investigation and receipt of the findings, stability analyses for the ash pond will be conducted, as appropriate. A revised Structural Stability Assessment Report incorporating the investigation results and corresponding factor of safety assessment will be prepared and issued within 30 days of receipt of the final pile investigation documentation.

## **4.2 Slope Protection [CFR 40 §257.73(d)(1)(ii)]**

*CCR unit has been designed, constructed, operated, and maintained with adequate slope protection to protect against surface erosion, wave action and adverse effects of sudden drawdown.*

There are no interior slopes for the ash pond as the impoundment is full and no longer impounds water. The downstream slopes of the ash pond dike are protected from erosion and deterioration by the establishment of heavy vegetative cover. Thick vegetation is present over the downstream slope of the dike adjacent to the Kanawha River. Existing slopes have been inspected for erosion, signs of seepage, animal burrows, and sloughing. Although no evidence of significant erosion or wave action was observed, there are areas along the dike above the normal pool level in the Kanawha River that show signs of erosion with over-steepened slopes above the erosion areas. Since the area was heavily wooded, it wasn't possible to inspect the full extents of the slope. Generally, the existing slope protection measures are considered adequate to further protect against surface erosion, wave action, and the adverse effects of sudden drawdown. The larger trees will need to be removed to provide better access in order to fully inspect the downstream slopes.

## **4.3 Dikes (Embankment) [CFR 40 §257.73(d)(1)(iii)]**

*CCR unit has been designed, constructed, operated, and maintained with dikes mechanically compacted to a density sufficient to withstand the range of loading conditions in the CCR unit.*

As previously noted, certified drawings were not available for the original design of the Cabin Creek Ash Pond. Based on subsurface investigation information, it is believed that the perimeter dike was constructed with standard earthwork equipment and is comprised of fill material consisting of re-compacted alluvial soils, bottom ash, and fly ash.

Earthfills used to construct the perimeter berms were visually classified as silt and silty sand. Field SPT N-values recorded in this material ranged from 0 to 44 bpf, with most of the blow counts ranging between 5 and 25 bpf, indicating loose to compact relative density. The average of SPT-N values for this material was 12 bpf. Laboratory tests indicated the in-situ moisture contents ranging from 6.7% to 29.2%. Gradation tests performed on four samples showed 22.6% to 52.6% material passing the No. 200 sieve.

CCR-Soil Mix (Embankment) and CCR (Embankment) materials used to raise the perimeter berms were also visually classified as silt and silty sand. SPT N-values for these materials ranged from 1 to 24 bpf, with most values between 5 and 15 bpf indicating loose to compact relative density. The average of SPT-N values for these materials was 11 bpf. Laboratory tests showed in-situ moisture contents ranging from 15% to 41.9%. Gradation tests on four samples showed that 18.9% to 78.6% of the material passed the No. 200 sieve.

At the time of this report, a factor of safety assessment of the Cabin Creek Ash Pond had been postponed, while an on-going investigation of the existing pile system along the northern slope of the ash pond adjacent to the Kanawha River was being performed. The pile system, if intact, provides additional resistance to slope failure along the potential critical failure sections on the north side of the perimeter dike. Upon completion of the pile investigation and receipt of the findings, stability analyses for the ash pond will be conducted, as appropriate. A revised Structural Stability Assessment Report incorporating the investigation results and corresponding factor of safety assessment will be prepared and issued within 30 days of receipt of the final pile investigation documentation.

#### **4.4 Vegetated Slopes [CFR 40 §257.73(d)(1)(iv)]**

CCR unit has been designed, constructed, operated, and maintained with vegetated slopes of dikes and surrounding areas, except for slopes which have an alternate form or forms of slope protection.

The EPA has vacated the requirement that vegetative cover on surface impoundment dikes be maintained at no more than six inches. However, the heavy tree growth on the exterior slopes of the dike specifically on the north and east ends of the ash pond are not consistent with good engineering practices. These areas should be cleared such that appropriate monitoring of the perimeter dike can be performed.

#### **4.5 Spillways [CFR 40 §257.73(d)(1)(v)]**

*CCR unit has been designed, constructed, operated, and maintained with a single spillway or a combination of spillways configured as specified in paragraph (d)(1)(v)(A). The combined capacity of all spillways must be designed, constructed, operated, and maintained to adequately manage flow during and following the peak discharge.*

The Cabin Creek Ash Pond is an inactive impoundment that no longer retains or has the ability to retain ponded water within the impoundment. Therefore, this section of the structural stability assessment is not applicable.

#### **4.6 Hydraulic Structures [CFR 40 §257.73(d)(1)(vi)]**

*CCR unit has been designed, constructed, operated, and maintained such that the hydraulic structures underlying the base of the CCR unit or passing through the dike of the CCR unit maintain structural integrity and are free of significant deterioration, deformation, distortion, bedding deficiencies, sedimentation, and debris which may negatively affect the operation of the hydraulic structure.*

There are numerous hydraulic structures, primarily pipes, that are located within the boundaries of the CCR unit. In order to evaluate these hydraulic structures, WSP attempted to perform a video pipe inspection (VPI) using closed-circuit television (CCTV) of the underlying piping network. However, due to sediment buildup in the pipes, the inspection was discontinued after only evaluating a total of 209 feet of piping beneath the ash pond. Another attempt at the VPI of the underlying hydraulic structures is currently in progress, and the results will be documented in a revised Structural Stability Assessment Report within 30 days of the receipt of the completed VPI documentation.4.1

#### **4.7 Downstream Slopes Adjacent to Water Body [CFR 40 §257.73(d)(1)(vii)]**

*CCR unit has been designed, constructed, operated and maintained with, for CCR units with downstream slopes which can be inundated by the pool of an adjacent water body, such as a river, stream or lake, downstream*

*slopes that maintain structural stability during low pool of the adjacent water body or sudden drawdown of the adjacent water body.*

The Cabin Creek Ash Pond is situated immediately adjacent to the Kanawha River. The river water elevation is regulated through a system of locks and gates, providing controlled flow conditions under normal and high-water scenarios. WSP reviewed USGS water gauge data both upstream and downstream of the site. The data indicate that prolonged flooding doesn't occur in this portion of the Kanawha River. As the river is a navigable channel, the river rises quickly during storm events, and then water is released, and the base water level conditions are re-established. Given this operational control, the occurrence of prolonged high-water levels sufficient to saturate the exterior slope of the dike (i.e., temporarily increasing the phreatic surface in the ash pond), followed by a sudden and significant drawdown, is not considered a credible loading condition. WSP reviewed available water level readings along the Kanawha River, which further suggests that significant water level changes in the alluvial soil do not occur.

Accordingly, a rapid drawdown stability analysis has not been performed, as this loading condition does not represent a realistic or governing case for the site.

## **5 STRUCTURAL STABILITY DEFICIENCIES [CFR 40 §257.73(d)(ii)]**

*The periodic assessment described in CFR 40 §257.73(d)(i) must identify any structural stability deficiencies associated with the CCR unit in addition to recommending corrective measures. If a deficiency or a release is identified during the periodic assessment, the owner or operator unit must remedy the deficiency or release as soon as feasible and prepare documentation detailing the corrective measures taken.*

As indicated in the previous paragraphs, several structural deficiencies were noted at the Cabin Creek Ash Pond. AEP must remedy these deficiencies as soon as feasible and document the corrective measures taken.

# Signature Page

**WSP USA Inc.**



Naveen Kumar Ganji, PE (GA, TN, TX, VA)  
*Senior Consultant*

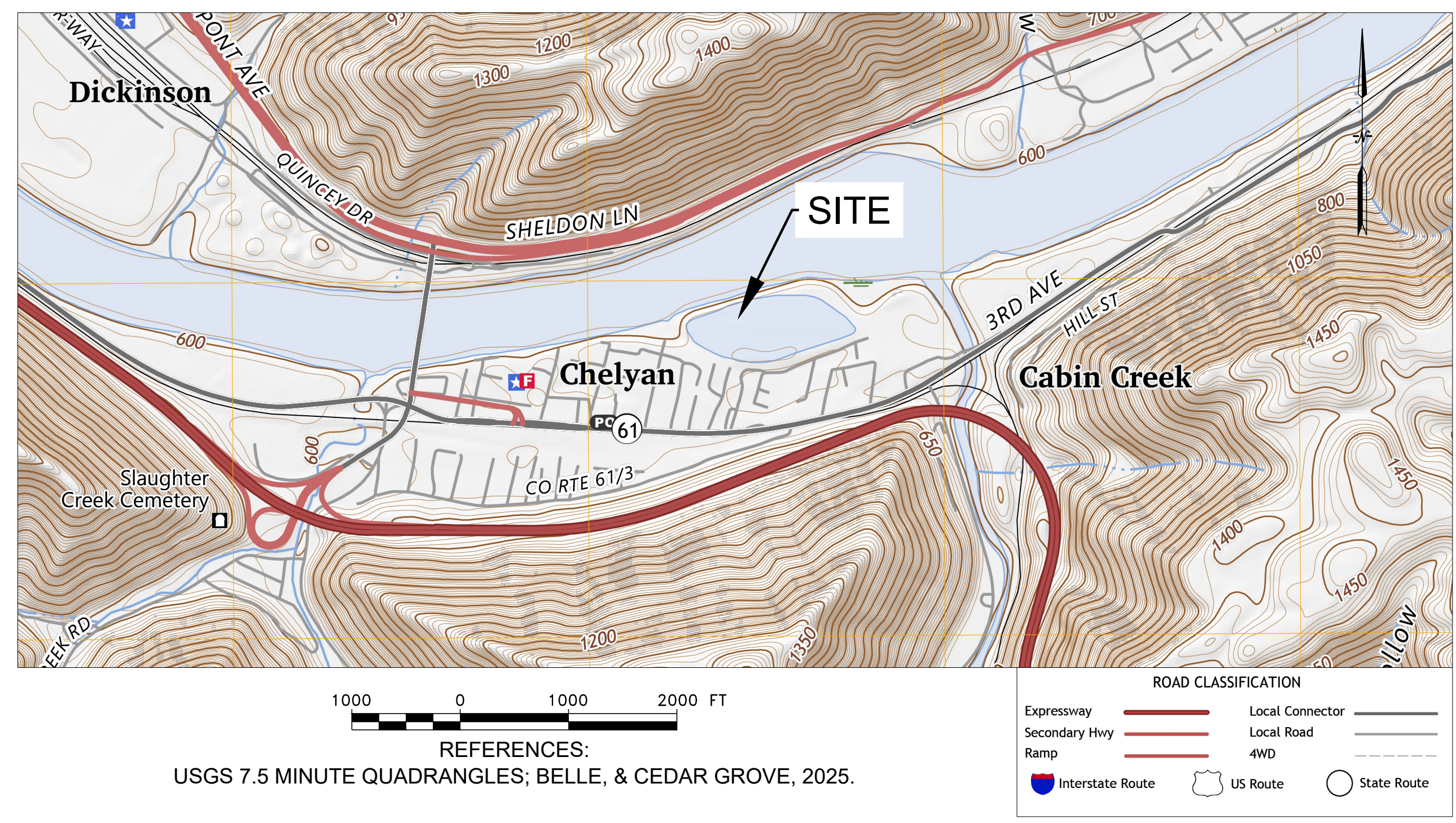
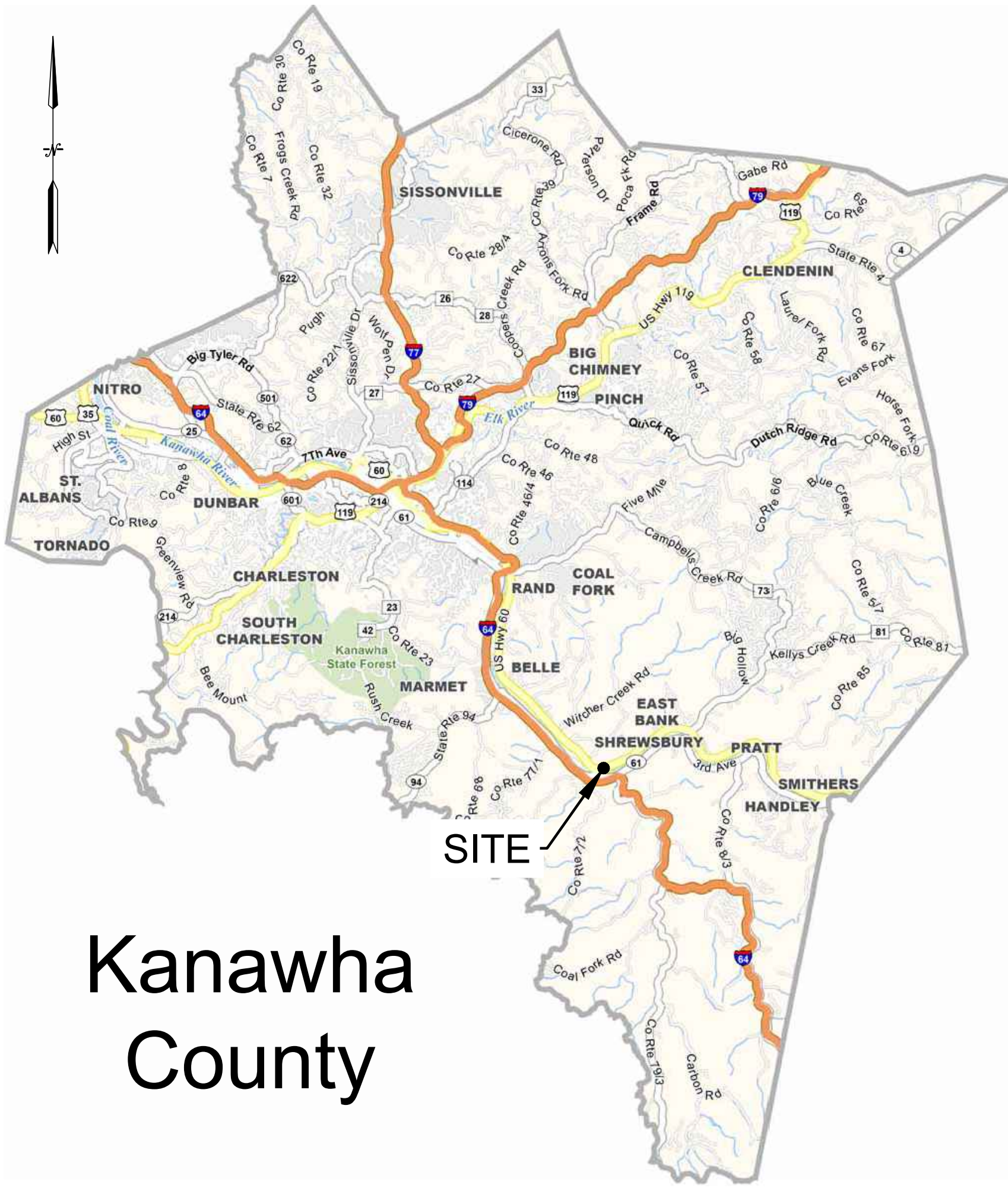
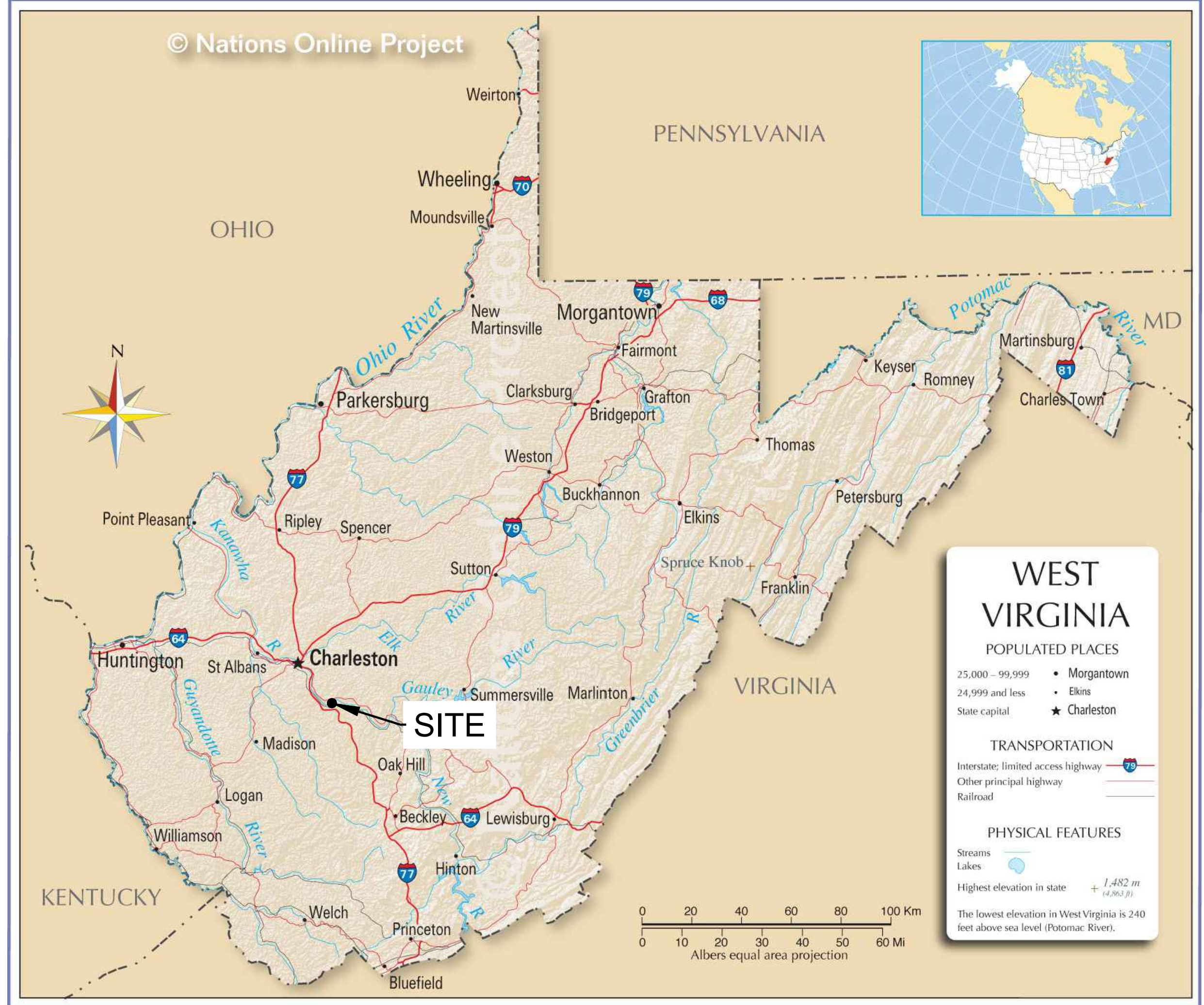


Steven J. Moeller, PE (AL, GA, NC, SC, TN, WV)  
*Senior Vice President*

NG/SM/ng

[https://wspnlinenam.sharepoint.com/sites/us-aep-cabin-creek-c/shared documents/5 technical work/structural stability assessment/ssa\\_cabincreek\\_ashpond\\_ccr\\_engsupport.docx](https://wspnlinenam.sharepoint.com/sites/us-aep-cabin-creek-c/shared%20documents/5%20technical%20work/structural%20stability%20assessment/ssa_cabincreek_ashpond_ccr_engsupport.docx)

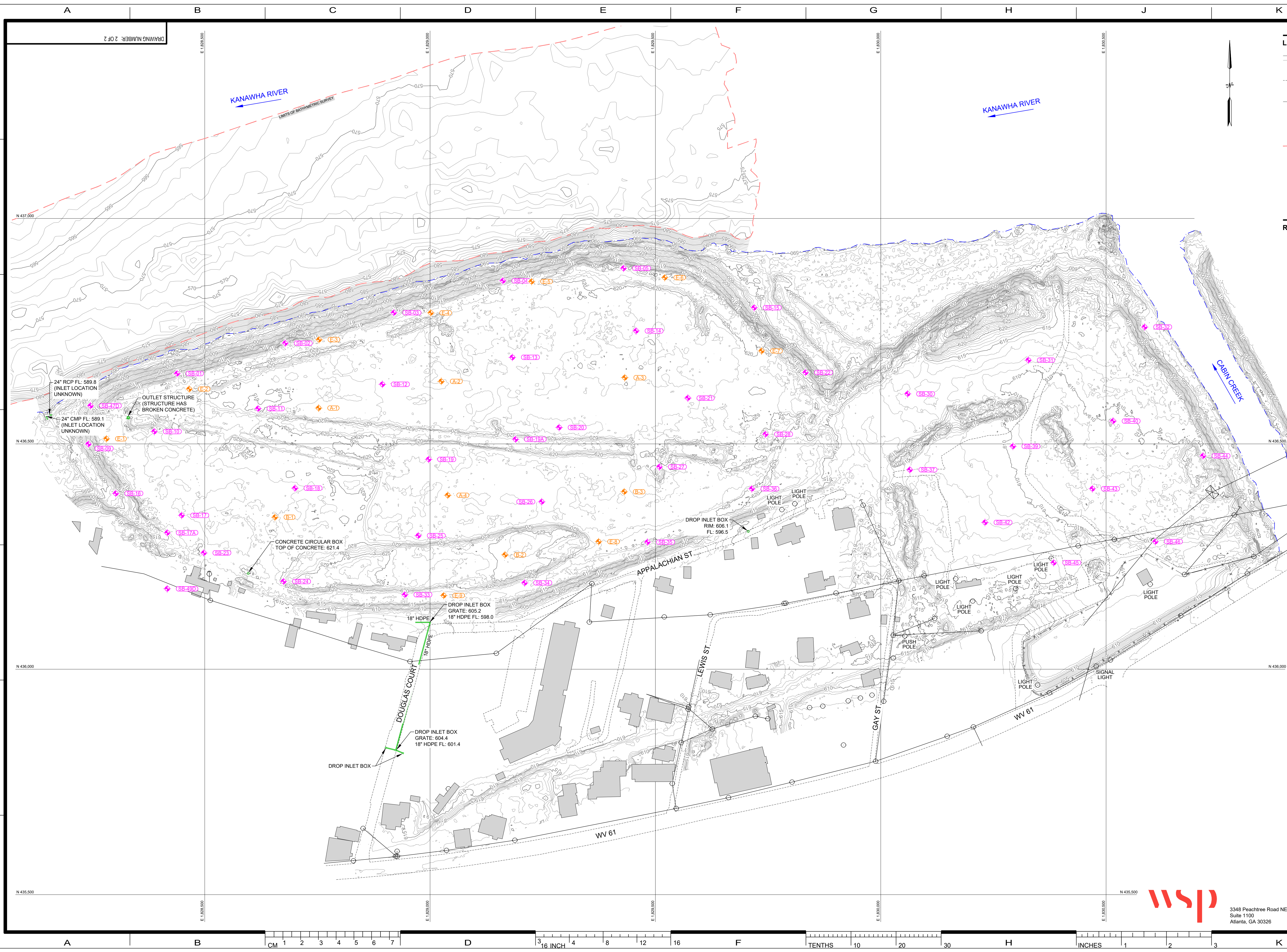
## Figures



DATE	NO.	DESCRIPTION	APPD.
<b>REVISIONS</b>			
THIS DRAWING IS CLASSIFIED AS:			
REFERENCE AEP's CORPORATE INFORMATION SECURITY POLICY			
THIS DRAWING IS THE PROPERTY OF THE <b>AMERICAN ELECTRIC POWER SERVICE CORP.</b> AND IS LOANED UPON CONDITION THAT IT IS NOT TO BE REPRODUCED OR COPIED, IN WHOLE OR IN PART, OR USED FOR FURNISHING INFORMATION TO ANY PERSON WITHOUT THE WRITTEN CONSENT OF THE <b>AEP SERVICE CORP.</b> OR FOR ANY PURPOSE DETRIMENTAL TO THEIR INTEREST, AND IS TO BE RETURNED UPON REQUEST.			
APPALACHIAN POWER COMPANY			
<b>CABIN CREEK ASH POND</b>			
CABIN CREEK		WEST VIRGINIA	
<b>SITE LOCATION PLAN</b>			
UNIT:	DRAWING NUMBER:	REV:	
FEET	1 OF 2	-	
SCALE:			
DR: CCP			
CH: NKG			
SUP: NKG			
ENG: SJM			
DATE: 12/04/2025	APPROVED BY		
		<b>AEP SERVICE CORP.</b> 1 RIVERSIDE PLAZA COLUMBUS, OH 43215	

G:\American Electric Power\Cabin Creek\Cabin Creek Site\Factor of Safety Assessment\Production\1 - Site Location Plan.dwg LAYOUT: 1 SAVED: 12/4/2025 2:29 PM PAGESETUP: PLOTTED: 12/4/2025 2:29 PM PAGESHEET: 1 OF 2

G:\American Electric Power\Cabin Creek\Cabin Creek Site Factor of Safety Assessment\Production2 - Slope Stability Section Locations.dwg LAYOUT: 2 SAVED: 12/24/2024 2:49 PM PAGES: 2 OF 2 PLOTTED: 4/24/2026 POWELL, CHRIS



**LEGEND**

- EXISTING CONTOURS
- EXISTING ROADS
- EXISTING FENCE
- EXISTING UTILITY POLES
- LIMITS OF BATHYMETRIC SURVEY
- WSP BORING LOCATIONS
- AEP/EHS GEOPROBE LOCATIONS

**REFERENCES**

- EXISTING TOPOGRAPHY AND BATHYMETRY PROVIDED BY AMERICAN ELECTRIC POWER.



DATE	NO.	DESCRIPTION	APPD.

**REVISIONS**

THIS DRAWING IS CLASSIFIED AS:

REFERENCE AEP'S CORPORATE INFORMATION SECURITY POLICY

THIS DRAWING IS THE PROPERTY OF THE AMERICAN ELECTRIC POWER SERVICE CORP. AND IS LOANED UPON CONDITION THAT IT IS NOT TO BE REPRODUCED OR COPIED, IN WHOLE OR IN PART, OR USED FOR FURNISHING INFORMATION TO ANY PERSON WITHOUT THE WRITTEN CONSENT OF THE AEP SERVICE CORP. OR FOR ANY PURPOSE DETRIMENTAL TO THEIR INTEREST, AND IS TO BE RETURNED UPON REQUEST.

APPALACHIAN POWER COMPANY

**CABIN CREEK ASH POND**

CABIN CREEK WEST VIRGINIA

**SITE TOPOGRAPHIC MAP**

UNIT: FEET	DRAWING NUMBER: 2 OF 2	REV: -
SCALE: 1" = 100'		
DR: CCP		
CH: NKG		
SUP: NKG		
ENG: SJM		
DATE: 12/04/2025		

APPROVED BY:

**AEP SERVICE CORP.**  
1 RIVERSIDE PLAZA  
COLUMBUS, OH 43215



3348 Peachtree Road NE  
Suite 1100  
Atlanta, GA 30326



**APPENDIX A**

**Historical Drawings**

W.6 (Zentral - Base  
Dredging) - 14.91

21 January 1956

Appalachian Electric Power Company  
30 Church Street  
New York 6, New York

Gentlemen:

In accordance with your written request dated 6 January 1956, the revised plans hereto attached are approved to supersede the plans for the works authorized by the Secretary of the Army, in letter dated 24 April 1954, from the Acting District Engineer at Huntington, West Virginia, to construct a dike around Cabin Creek Island, dredge approximately 200,000 cubic yards of material along the island and fill the back channel of the island, in the Kanawha River, at Cabin Creek Junction, West Virginia, 74.0 miles above the mouth of the river.


The revised plans provide for the addition of a line of wood piles, with rock fill landward of the piling, for a distance of 650 feet along the downstream riverward portion of the dike, and stone riprap for a distance of 650 feet along the upstream riverward portion of the dike.

The conditions to which the work is made subject remain in full force and effect.

Please acknowledge receipt of this letter.

By authority of the Secretary of the Army:

Drawing No. S-SK 13153,  
in 3 sheets, revised  
6 January 1956, attached

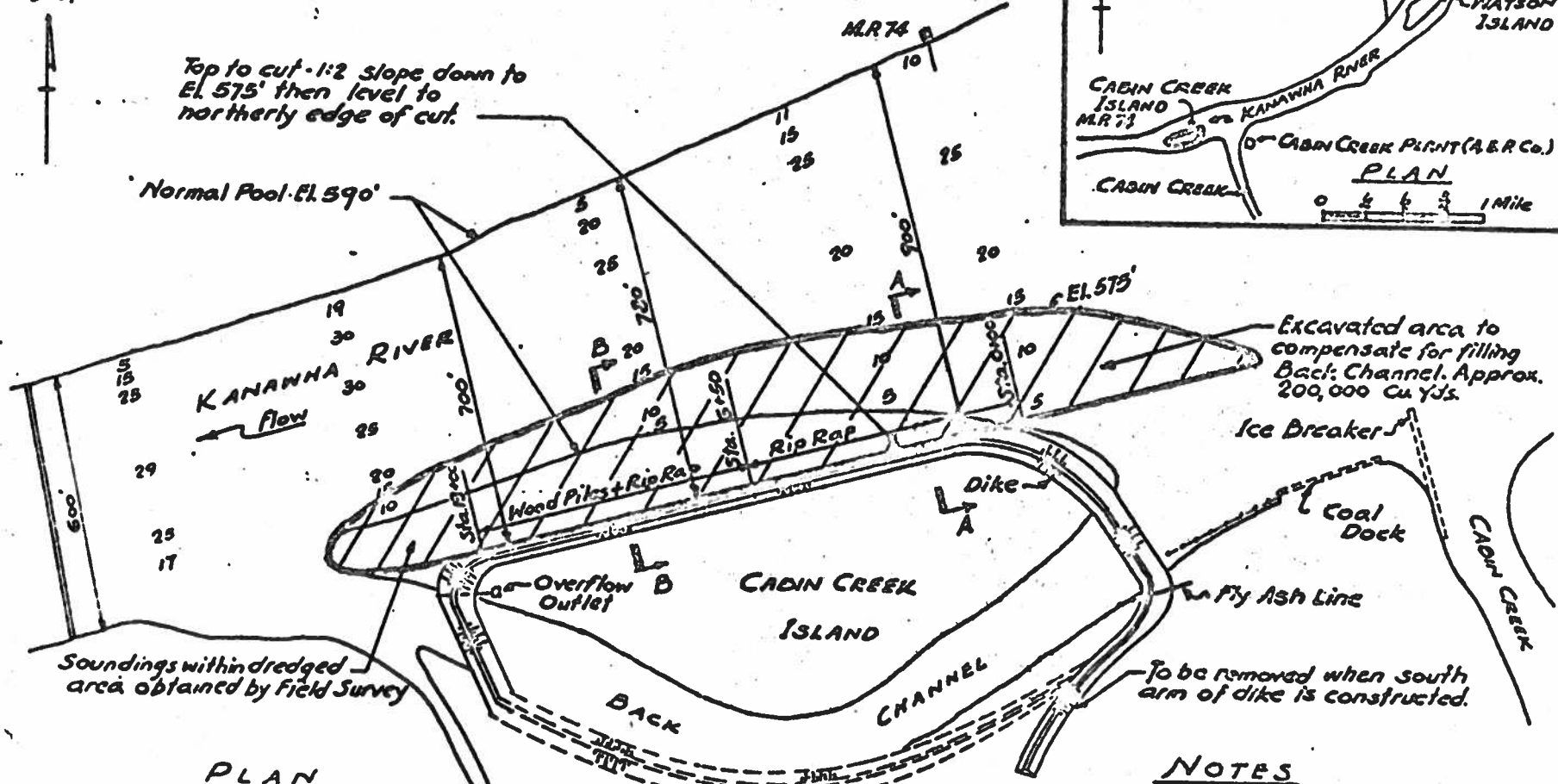
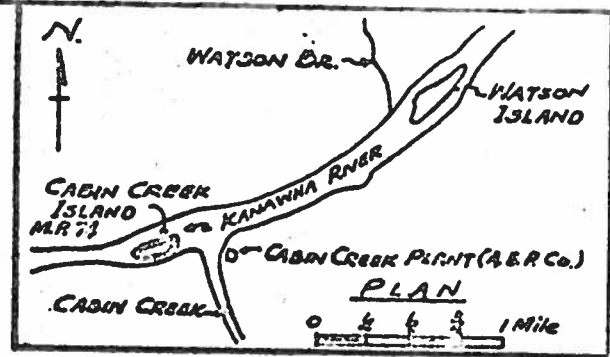
  
G. T. DERBY  
Colonel, Corps of Engineers  
District Engineer

W.6 (Kanawha R. - Dike & Dredging) - 14.91



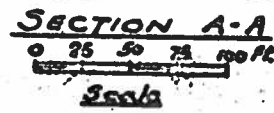
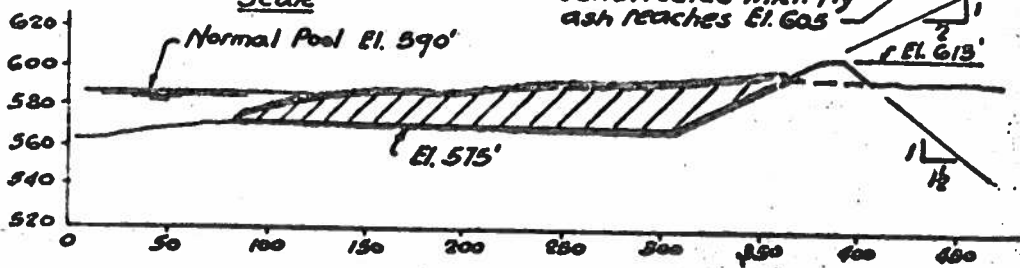
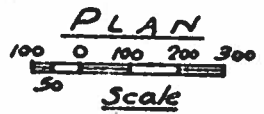
Top to cut - 1:2 slope down to El. 575' then level to northerly edge of cut.

Normal Pool - El. 590'



Excavated area to compensate for filling Back Channel. Approx. 200,000 Cu Yds.

Soundings within dredged area obtained by Field Survey



**NOTES**

Ref: U.S. Engineers Survey Sheet 15, Cabin Creek is located 70.3 miles above the mouth of the Kanawha River. Elevations are referred to M.S.L. Sandy Hook Datum.

Normal Pool of the Kanawha River is 590'. High Water of the Kanawha River is 617.6'. Dredged material, where suitable, to be used for construction of dike. Remainder to be deposited on island or in Back Channel within proposed dike.

Application By:  
Appalachian Electric Power Company,  
Cabin Creek, West Virginia  
October 21, 1953

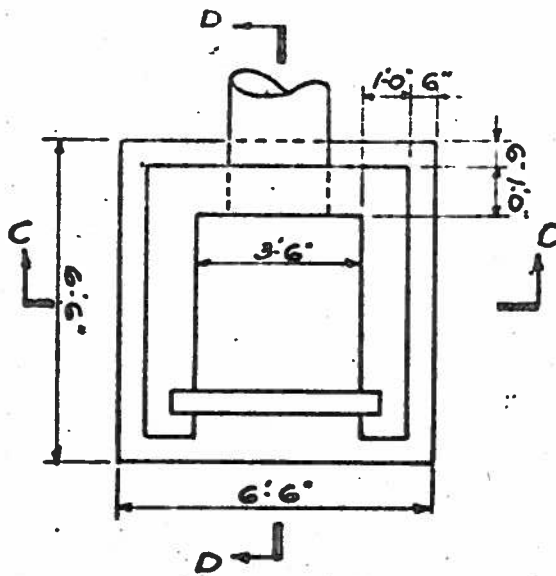
Revised 2-13-54  
1-6-

PROPOSED FLY ASH STORAGE  
AT CABIN CREEK ISLAND  
CABIN CREEK POWER PLANT

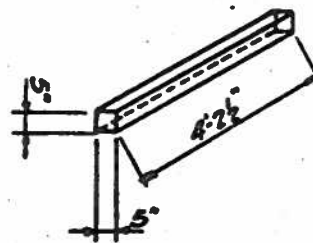
Application By:  
 Appalachian Electric Power Company  
 Cabin Creek, West Virginia  
 October 24, 1958

Revised 1-6-58

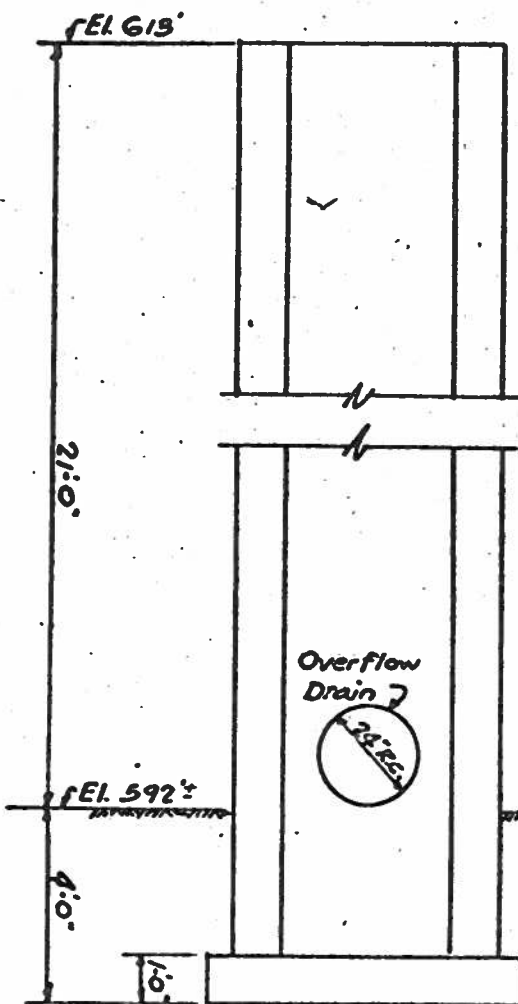
DETAIL OF OVERFLOW OUTLET  
 IN FLY ASH STORAGE AREA  
 AT CABIN CREEK ISLAND  
 CABIN CREEK POWER PLANT  
 D-1 NA 5-2-1153



PLAN

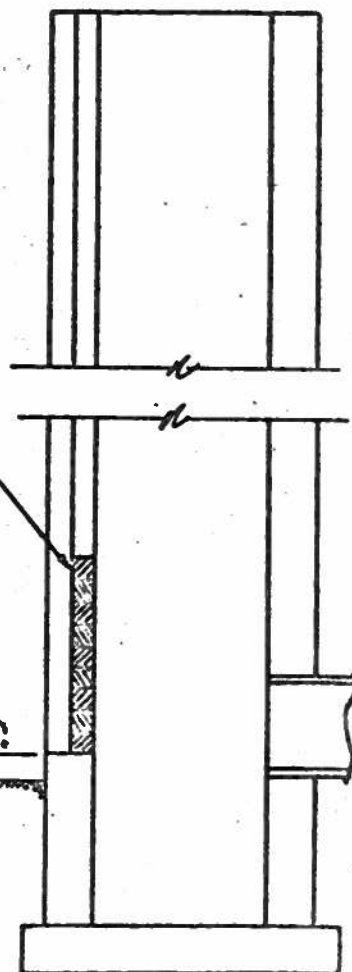


DETAIL OF CONCRETE PLANK

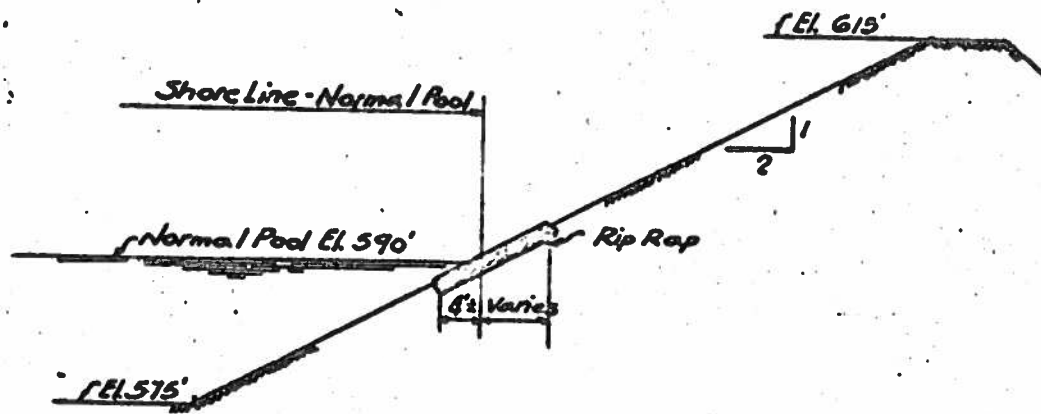


SECTION C-C

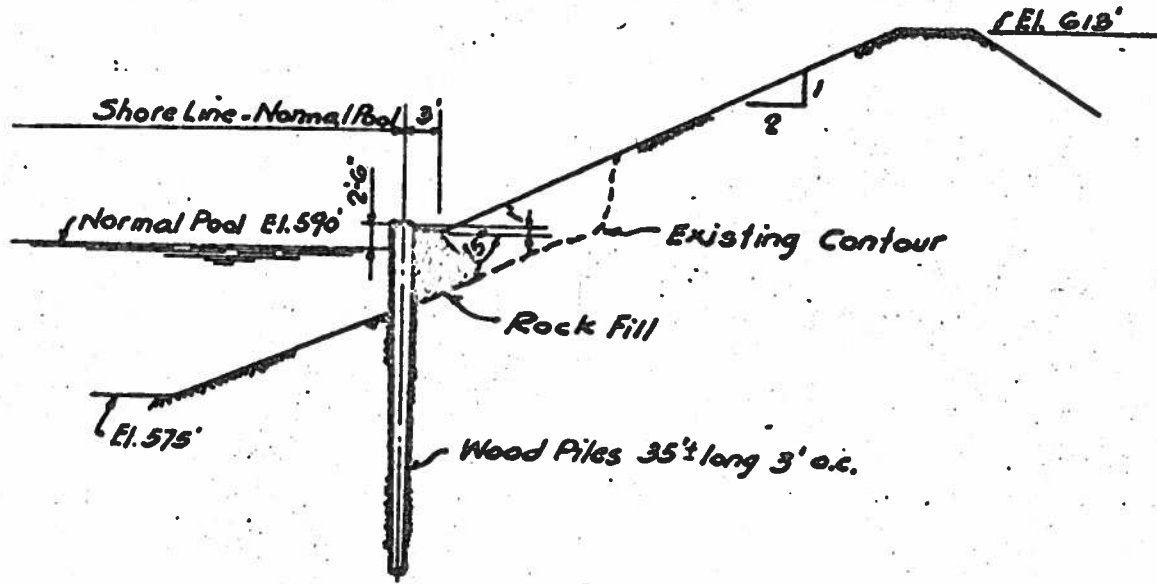
Planks installed  
 as required



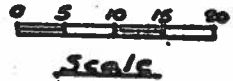
SECTION D-D



SECTION A-A (ENLARGED)  
Typical For Stations 0+00-6+50



SECTION B-B  
Typical For Stations 6+50-13+00



Application By:  
 Appalachian Electric Power Company  
 Cabin Creek, West Virginia  
 January 6, 1956

PROPOSED FLY ASH STORAGE  
 AT CABIN CREEK ISLAND  
 CABIN CREEK POWER PLANT  
 SHEET No. 5-52-175B

DEPARTMENT OF THE ARMY

NOTE.—It is to be understood that this instrument does not give any property rights either in real estate or material, or any exclusive privileges; and that it does not authorize any injury to private property or invasion of private rights, or any infringement of Federal, State, or local laws or regulations, nor does it obviate the necessity of obtaining State assent to the work authorized. IT EXPRESSLY EXPRESSES THE ASSENT OF THE FEDERAL GOVERNMENT SO FAR AS CONCERNS THE PUBLIC RIGHTS OF NAVIGATION. (See *Crummey v. Chicago*, 188 U. S., 410.)

16-17104-2

PERMIT

Huntington District  
Corps of Engineers.  
Huntington 18, W. Va.  
18 April, 1954

Appalachian Electric Power Company  
30 Church Street  
New York 6, New York

Gentlemen:

Referring to written request dated 19 February 1954 (signed by H. A. Kanner, Vice President) addressed to the District Engineer, Huntington District, Corps of Engineers, U. S. Army, P. O. Box 2127, Huntington, West Virginia,

I have to inform you that, upon the recommendation of the Chief of Engineers, and under the provisions of Section 10 of the Act of Congress approved March 3, 1899, entitled "An act making appropriations for the construction, repair, and preservation of certain public works on rivers and harbors, and for other purposes," you are hereby authorized by the Secretary of the Army.

to construct a dike around Cabin Creek Island, dredge approximately 200,000 cubic yards of material along the island and fill the back channel of the island,

(Here describe the proposed structure or work.)

in the Kanawha River,

(Here to be named the river, harbor, or waterway concerned.)

at Cabin Creek Junction, West Virginia, 74.0 miles above the mouth of the river,  
(Here to be named the nearest well-known locality—preferably a town or city—and the distance in miles and tenths from some definite point in the same, stating whether above or below or giving direction by points of compass.)

in red

in accordance with the plans shown on the drawing attached hereto marked "Proposed Fly Ash Storage at Cabin Creek Island #24, Dwg. No. S-SK-10153," in two sheets, dated 21 October 1953, revised 16 February 1954,

(Or drawings: give file number or other definite identification marks.)

subject to the following conditions:

(a) That the work shall be subject to the review and approval of the District Engineer, Corps of Engineers, in charge of the locality, who may temporarily suspend the work at any time, if in his judgment the interests of navigation so require.

(b) That any material dredged in the prosecution of the work herein authorized shall be removed evenly and no large refuse piles, ridges across the bed of the waterway, or deep holes that may have a tendency to cause injury to navigable channels or to the banks of the waterway shall be left. If any pipe, wire, or cable hereby authorized is laid in a trench, the formation of permanent ridges across the bed of the waterway shall be avoided and the back filling shall be so done as not to increase the cost of future dredging for navigation. Any material to be deposited or dumped at the locality shown on the drawing hereto attached, and, if so prescribed thereon, within or behind a good and substantial bulkhead or bulkheads, such as will prevent escape of the material in the waterway. If the material is to be deposited in the harbor of New York, or in its adjacent or tributary waters, or in Long Island Sound, a permit therefor must be previously obtained from the Supervisor of New York Harbor, Whitehall Building, New York City.

(c) That there shall be no unreasonable interference with navigation by the work herein authorized.

(d) That if inspections or any other operations by the United States are necessary in the interest of navigation, all expenses connected therewith shall be borne by the permittee.

(e) That no attempt shall be made by the permittee or the owner to forbid the full and free use by the public of all navigable waters at or adjacent to the work or structure.

(f) That if future operations by the United States require an alteration in the position of the structure or work herein authorized, or if, in the opinion of the Secretary of the Army, it shall cause unreasonable obstruction to the free navigation of said water, the owner will be required upon due notice from the Secretary of the Army, to remove or alter the structural work or obstructions caused thereby without expense to the United States, so as to render navigation reasonably free, easy, and unobstructed; and if, upon the expiration or revocation of this permit, the structure, fill, excavation, or other modification of the watercourse hereby authorized shall not be completed, the owners shall, without expense to the United States, and to such extent and in such time and manner as the Secretary of the Army may require, remove all or any portion of the uncompleted structure or fill and restore to its former condition the navigable capacity of the watercourse. No claim shall be made against the United States on account of any such removal or alteration.


(g) That the United States shall in no case be liable for any damage or injury to the structure or work herein authorized which may be caused by or result from future operations undertaken by the Government for the conservation or improvement of navigation, or for other purposes, and no claim or right to compensation shall accrue from any such damage.

(h) That if the display of lights and signals on any work hereby authorized is not otherwise provided for by law, such lights and signals as may be prescribed by the U. S. Coast Guard, shall be installed and maintained by and at the expense of the owner.

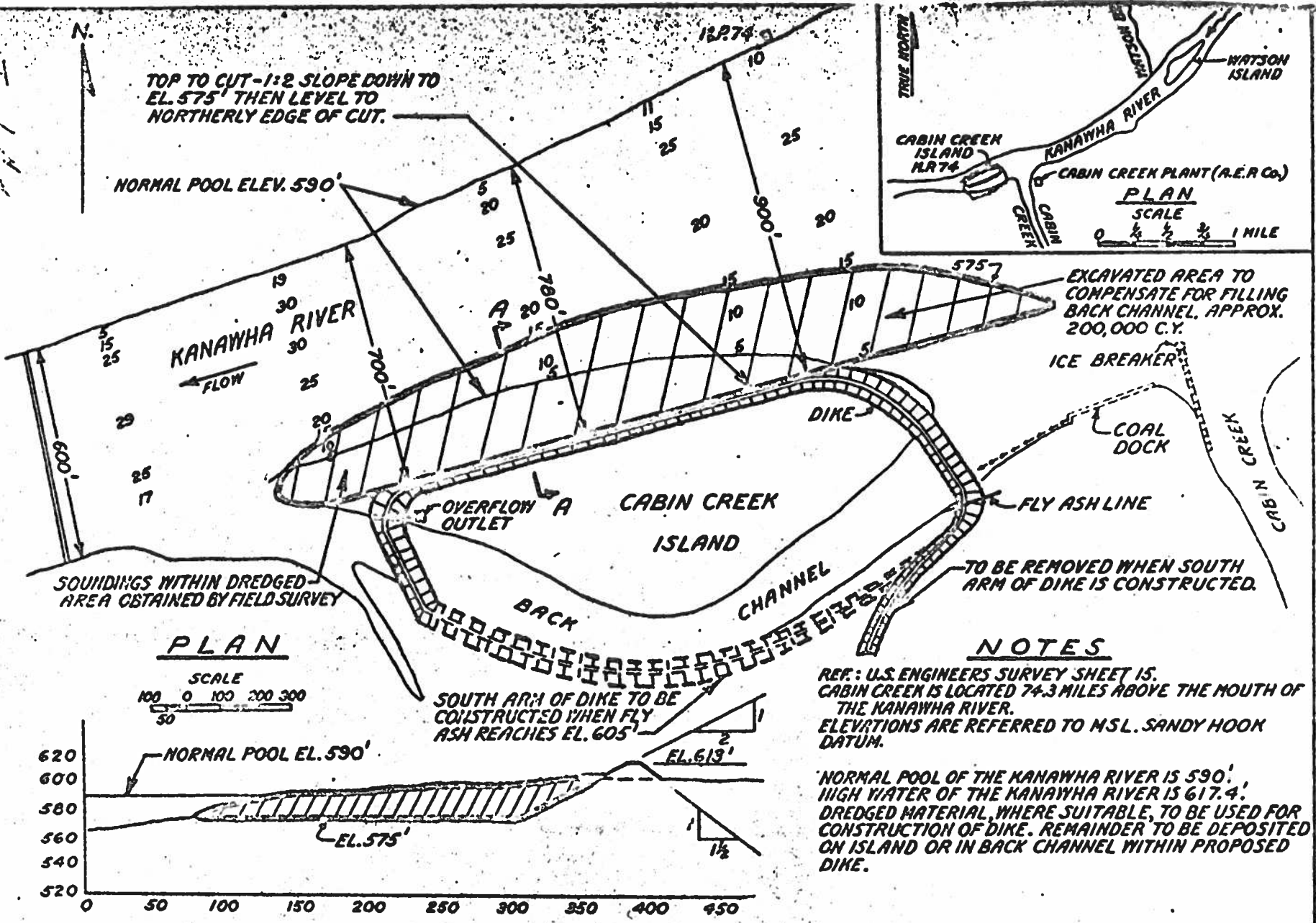
(i) That the permittee shall notify the said district engineer at what time the work will be commenced, and as far in advance of the time of commencement as the said district engineer may specify, and shall also notify him promptly, in writing, of the commencement of work, suspension of work, if for a period of more than one week, resumption of work, and its completion.

(j) That if the structure or work herein authorized is not completed on or before thirty-first (31st) day of October, 1917, this permit, if not previously revoked or specifically extended, shall cease and be null and void.

By authority of the Secretary of the Army:

  
HARRY BECKWITH  
Chief Engineer, Assistant  
Acting District Engineer

Incl. 1



TOP TO CUT - 1:2 SLOPE DOWN TO EL. 575' THEN LEVEL TO NORTHERLY EDGE OF CUT.

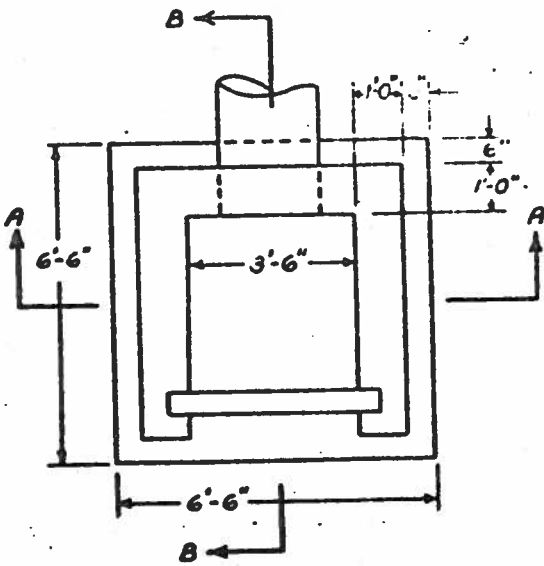
NORMAL POOL ELEV. 590'

EXCAVATED AREA TO COMPENSATE FOR FILLING BACK CHANNEL. APPROX. 200,000 C.Y.

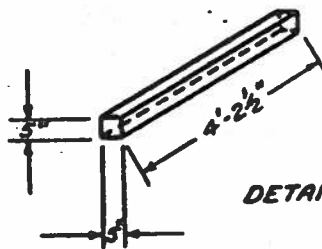
TO BE REMOVED WHEN SOUTH ARM OF DIKE IS CONSTRUCTED.

APPLICATION BY:  
APPALACHIAN ELECTRIC POWER COMPANY  
CABIN CREEK, WEST VIRGINIA  
OCTOBER 21, 1952 REVISED 2-15-54

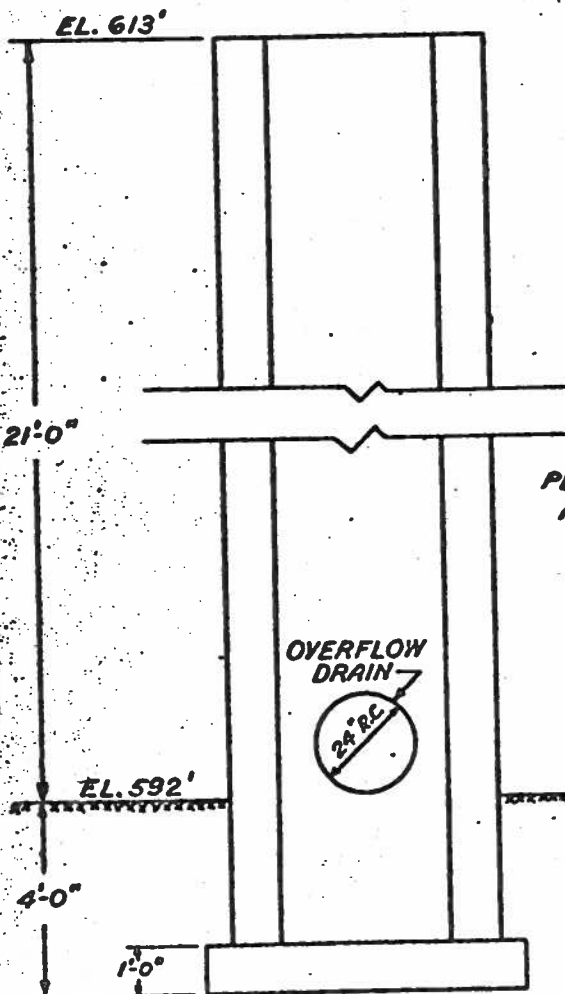
PROPOSED FLY ASH STORAGE  
AT CABIN CREEK ISLAND  
CABIN CREEK POWER PLANT  
SHEET 1052 DWG No. S-SK-10153



PLAN

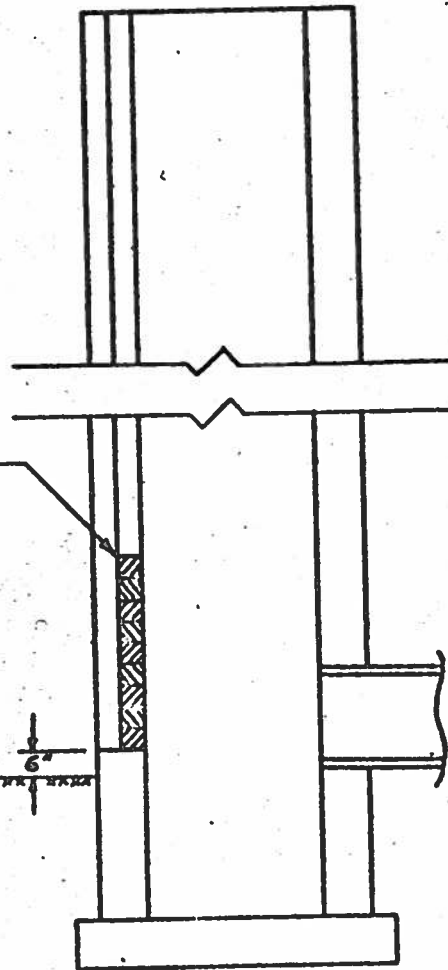


DETAIL OF CONCRETE PLANK



SECTION A-A

PLANKS INSTALLED AS REQUIRED



SECTION B-B

DETAIL OF OVERFLOW OUTLET  
 FLY ASH STORAGE AREA  
 CABIN CREEK POWER PLANT  
 SHEET 2 OF 2 - DWG. No. S-SK-10153  
 SCALE: 1/4" = 1'-0"

APPLICATION BY:  
 APPALACHIAN ELECTRIC POWER COMPANY  
 CABIN CREEK, WEST VIRGINIA  
 OCTOBER 21, 1953

# WAR DEPARTMENT

NOTE.—It is to be understood that this instrument does not give any property rights either in real estate or material, or any exclusive privileges; and that it does not authorize any injury to private property or invasion of private rights, or any infringement of Federal, State, or local laws or regulations, nor does it obviate the necessity of obtaining State assent to the work authorized. IT MERELY EXPRESSES THE ASSENT OF THE FEDERAL GOVERNMENT SO FAR AS CONCERNS THE PUBLIC RIGHTS OF NAVIGATION. (See *Cummings v. Chicago*, 183 U. S., 410.) 10-13148

## PERMIT

United States Engineer Office.  
Ohio River Division  
Columbus, Ohio August 2, 1943.

Appalachian Electric Power Company  
201 Virginia Street  
Charleston, West Virginia

Gentlemen:

Referring to written request dated July 10, 1943 (signed by De Fe Montague, Civil Engineer) addressed to the District Engineer, United States Engineer Office, Huntington, West Virginia—

I have to inform you that, upon the recommendation of the Chief of Engineers, and under the provisions of Section 10 of the Act of Congress approved March 3, 1899, entitled "An act making appropriations for the construction, repair, and preservation of certain public works on rivers and harbors, and for other purposes," you are hereby authorized by the Secretary of War,

to construct a 16-inch sanitary sewer outlet and concrete handrail,  
(Here describe the proposed structure or work.)

in Kanawha River, left bank,  
(Here to be named the river, harbor, or waterway concerned.)

at Cabin Creek, West Virginia, 5400 feet above the mouth of Cabin Creek, 71.0  
(Here to be named the nearest well-known locality—preferably a town or city—and the distance in miles and tenths from some definite point in the same, stating whether above or below or giving direction by points of compass.)  
miles above the mouth of the Kanawha River.

In accordance with the plans shown on the drawing attached hereto marked "Proposed  
(Or drawing; give file number or other definite identification marks.)

Handrail & Outlet for a 16" Sanitary Sewer 0 0 0", in case sheet dated July 16, 1943

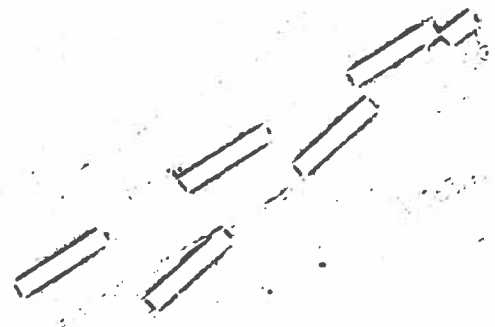
subject to the following conditions:

INCL. 272



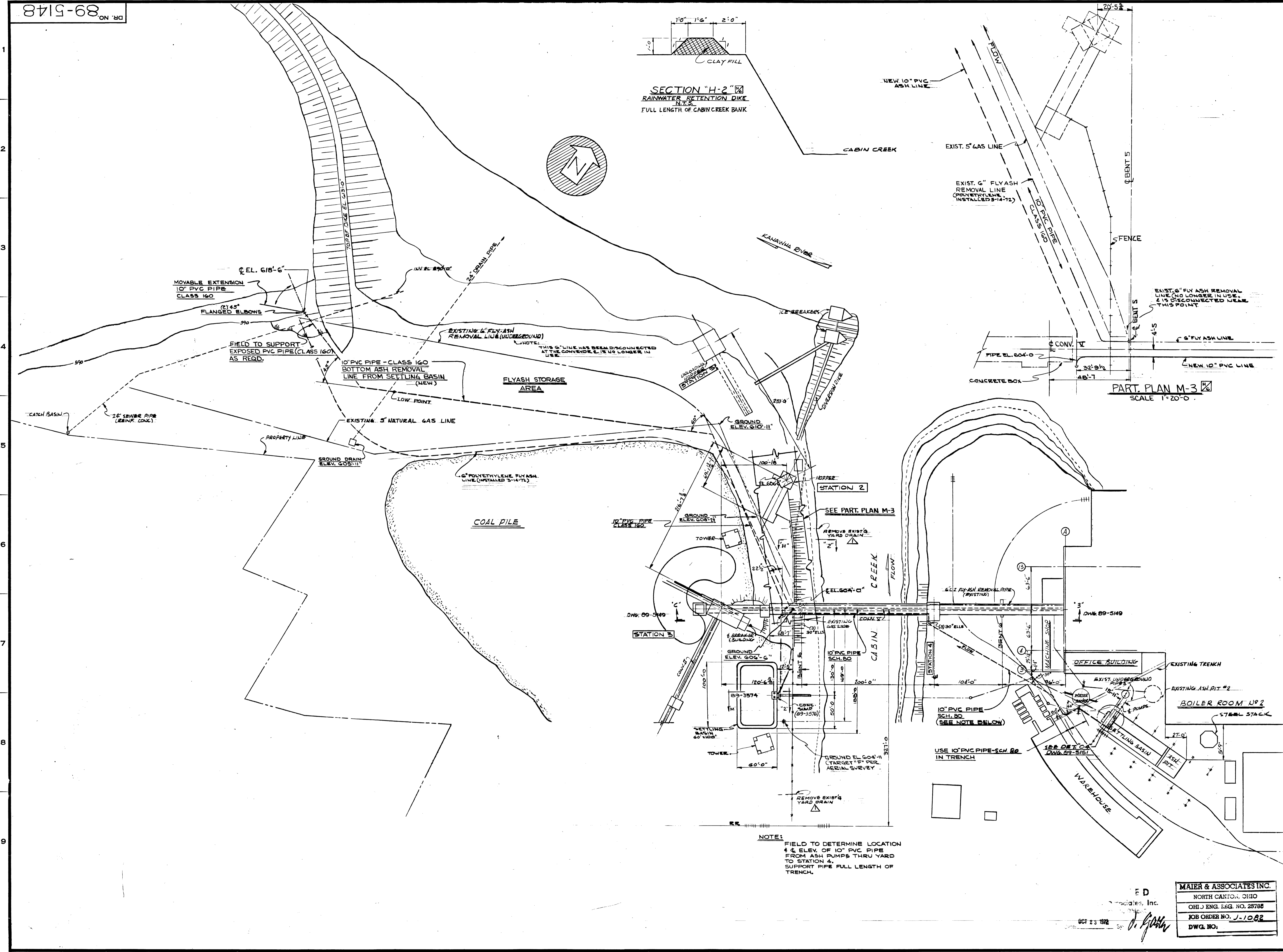


Note  
 Height 8500 feet 6104



18 1/2 1/4 1/4  
 1/4 1/4 1/4

18 1/2 1/4 1/4  
 1/4 1/4 1/4  
 1/4 1/4 1/4  
 1/4 1/4 1/4



REFERENCE DWGS

SECTIONS & DETAILS	89-5149
SECTIONS & DETAILS	89-5150
SECTIONS & DETAILS	89-5151

REVISIONS

DATE	NO.	DESCRIPTION	APP'D.
12/22/92	1	REMOVED EXIST. DRAIN FROM COAL PILE TO CREEK ADDED DIM. SECT. H-2, NEW 10\"/>	

"THIS DRAWING IS THE PROPERTY OF THE AMERICAN ELECTRIC POWER SERVICE CORP. AND IS LOANED UPON CONDITION THAT IT IS NOT TO BE REPRODUCED OR COPIED, IN WHOLE OR IN PART, OR USED FOR FURNISHING INFORMATION TO ANY PERSON WITHOUT THE WRITTEN CONSENT OF THE AEP SERVICE CORP. OR FOR ANY PURPOSE DETRIMENTAL TO THEIR INTEREST, AND IS TO BE RETURNED UPON REQUEST."

APPALACHIAN ELECTRIC POWER CO.  
CABIN CREEK PLANT  
CABIN CREEK, W. VA.

BOILER NOS. 81, 82, 91, & 92  
ASH SETTLING BASIN  
BOTTOM ASH REMOVAL PIPE

DR. NO. 89-5148-1

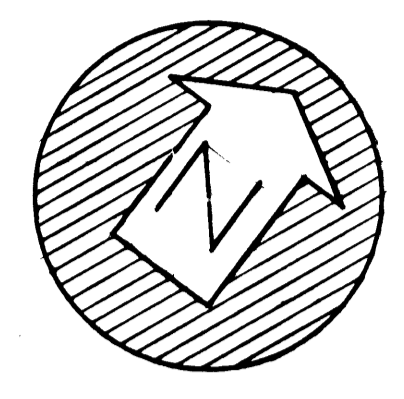
ARCH.	ELEC.	MECH.	STR.
SCALE: 1"=50'	ENGR. APPROVED: <i>[Signature]</i>		
DR. 7/6/92	DESIGN DIV.		
NO. LDR.	DATE: 8/15/92		
AMERICAN ELECTRIC POWER SERVICE CORP. P. O. BOX 487 CANTON, OHIO, 44701			

MAIER & ASSOCIATES INC.  
NORTH CANTON, OHIO  
OHIO ENG. REG. NO. 28788  
JOB ORDER NO. J-1082  
DWG. NO.

NOTE: FIELD TO DETERMINE LOCATION # 4 ELEV. OF 10\"/>

PART PLAN M-3  
SCALE 1"=20'-0"

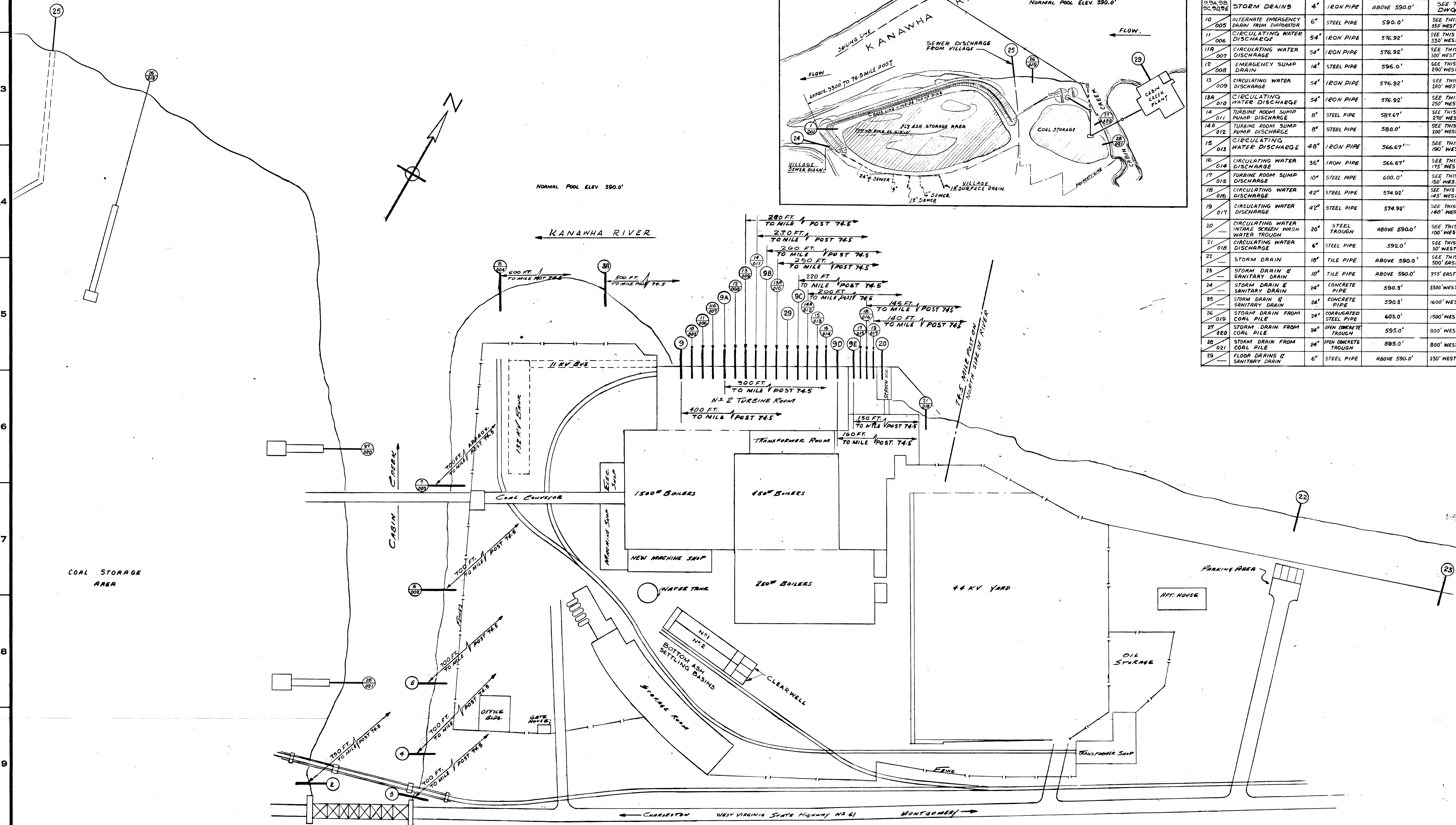
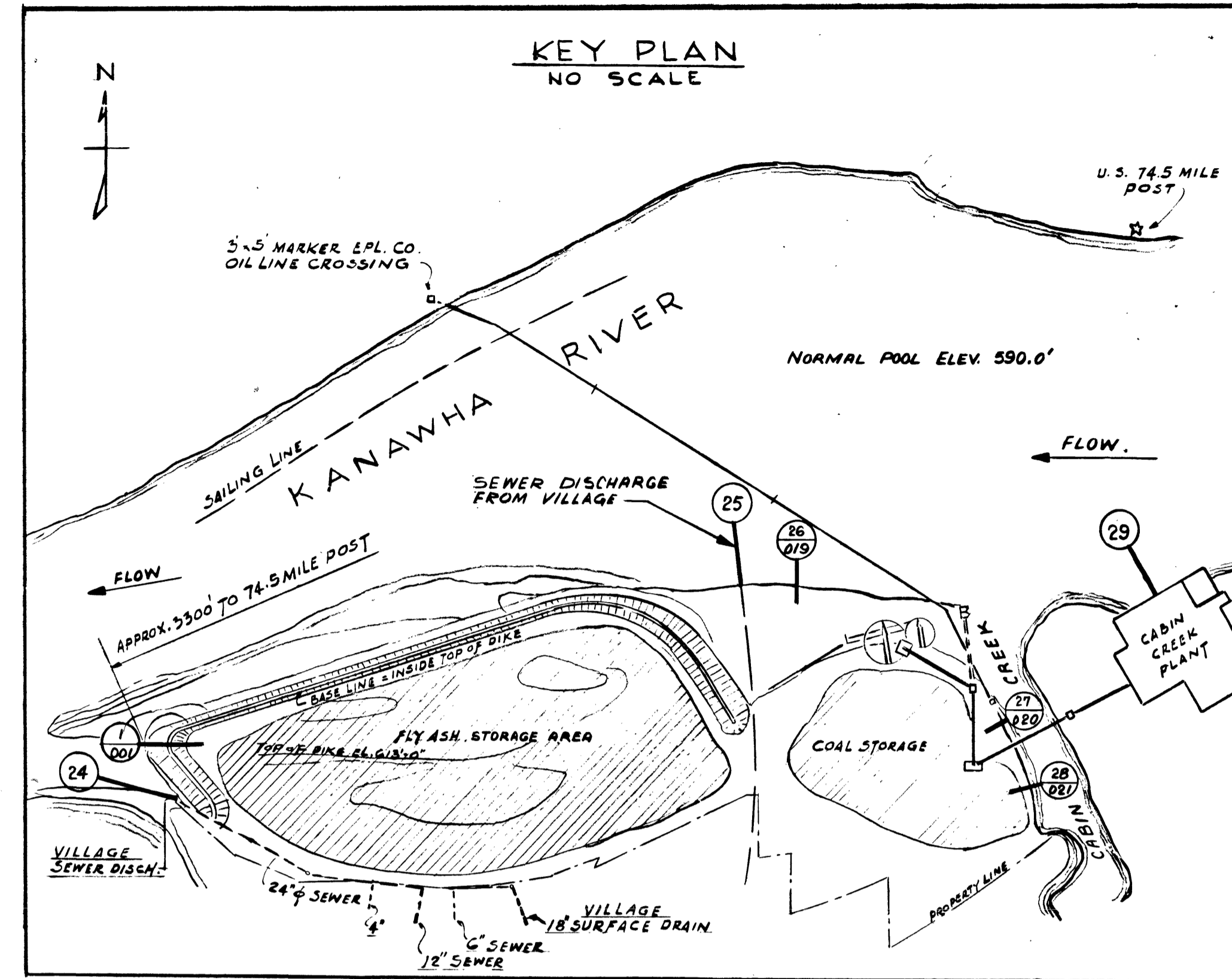
SECTION "H-2"  
RAINWATER RETENTION DIKE  
FULL LENGTH OF CABIN CREEK BANK



UCT 23 1972

SCHEDULE OF RIVER OUTFALLS

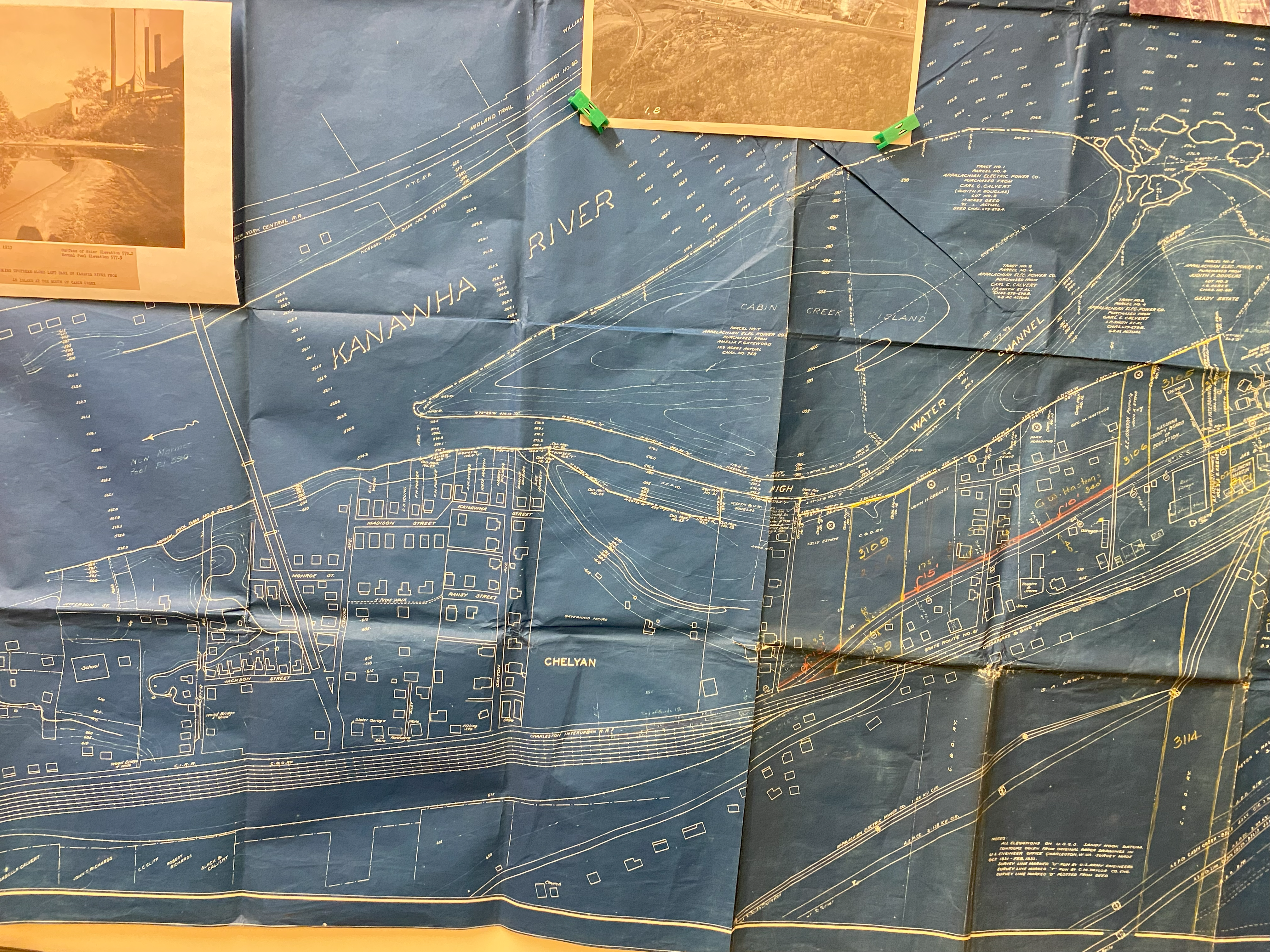
OUTFALL NO. & SERVICE	SIZE	CONSTRUCTION	INVERT ELEVATION AT DISCHARGE	LOCATION	REMARKS
1 001 FLY ASH STORAGE AREA OVERFLOW	24"	CONCRETE PIPE	590.0'	SEE THIS DWG. H/3	INTERMITTENT FLOW NEAR SKIMMER FOR SOLIDS RETENTION AT OVERFLOW
2 STORM DRAIN & SANITARY DRAIN	30"	TILE PIPE	ABOVE 590.0'	SEE THIS DWG. D/3	UNCONTAMINATED STORM WATER & TREATED SANITARY WASTES
3 & 3A STORM DRAINS	8"	TILE PIPE	ABOVE 590.0'	SEE THIS DWG. D/3	UNCONTAMINATED STORM WATER (2 PIPES)
4 STORM DRAIN	20"	TILE PIPE	ABOVE 590.0'	SEE THIS DWG. D/3	UNCONTAMINATED STORM WATER
5 STORM DRAIN & SANITARY DRAIN	24"	TILE PIPE	ABOVE 590.0'	SEE THIS DWG. D/3	UNCONTAMINATED STORM WATER & TREATED SANITARY WASTES
6 STORM DRAIN, FILTER BACKWASH DRAIN & BAKER ROOM DRAIN	20"	TILE PIPE	591.16'	SEE THIS DWG. D/7	UNCONTAMINATED STORM WATER & INTERMITTENT DISCHARGE OF PROCESS WASTES FROM FILTERS
7 BOTTOM ASH PIT OVERFLOW	30"	TILE PIPE	595.0'	SEE THIS DWG. D/4	NEAR SKIMMER FOR SOLIDS RETENTION AT OVERFLOW
8 STORM DRAIN, SANITARY DRAIN, BAKER BLOWDOWN DISCHARGE	24"	TILE PIPE	598.0'	SEE THIS DWG. F/5	UNCONTAMINATED STORM WATER, TREATED SANITARY WASTES, UNTREATED PROCESS WASTES
9A, 9B, 9C STORM DRAINS	4"	IRON PIPE	ABOVE 590.0'	SEE THIS DWG. G/6, H/6	UNCONTAMINATED STORM WATER (3 PIPES)
10 ALTERNATE EMERGENCY DRAIN FROM EVAPORATOR	6"	STEEL PIPE	590.0'	SEE THIS DWG. G/5 300' WEST M.P. 74.5	EMERGENCY PROCESS DRAIN UNTREATED PROCESS WASTES
11 CIRCULATING WATER DISCHARGE	54"	IRON PIPE	576.92'	SEE THIS DWG. G/5 330' WEST M.P. 74.5	UNCONTAMINATED COOLING WATER CONDENSER # 9
11A CIRCULATING WATER DISCHARGE	54"	IRON PIPE	576.92'	SEE THIS DWG. G/5 300' WEST M.P. 74.5	UNCONTAMINATED COOLING WATER CONDENSER # 5
12 EMERGENCY SUMP DRAIN	14"	STEEL PIPE	596.0'	SEE THIS DWG. G/5 290' WEST M.P. 74.5	UNCONTAMINATED TURBINE ROOM FLOOR DRAINS
13 CIRCULATING WATER DISCHARGE	54"	IRON PIPE	576.92'	SEE THIS DWG. G/5 280' WEST M.P. 74.5	UNCONTAMINATED COOLING WATER CONDENSER # 8
13A CIRCULATING WATER DISCHARGE	54"	IRON PIPE	576.92'	SEE THIS DWG. G/5 250' WEST M.P. 74.5	UNCONTAMINATED COOLING WATER CONDENSER # 8
14 TURBINE ROOM SUMP PUMP DISCHARGE	8"	STEEL PIPE	587.67'	SEE THIS DWG. G/5 270' WEST M.P. 74.5	INTERMITTENT DISCHARGE UNCONTAMINATED PROCESS WASTES
14A TURBINE ROOM SUMP PUMP DISCHARGE	8"	STEEL PIPE	588.0'	SEE THIS DWG. H/5 200' WEST M.P. 74.5	INTERMITTENT DISCHARGE UNCONTAMINATED PROCESS WASTES
15 CIRCULATING WATER DISCHARGE	48"	IRON PIPE	566.67'	SEE THIS DWG. H/5 190' WEST M.P. 74.5	UNCONTAMINATED COOLING WATER CONDENSER # 6 INACTIVE - COLD RESERVE
16 CIRCULATING WATER DISCHARGE	36"	IRON PIPE	566.67'	SEE THIS DWG. H/5 175' WEST M.P. 74.5	UNCONTAMINATED COOLING WATER CONDENSER # 5, INACTIVE - COLD RESERVE
17 TURBINE ROOM SUMP DISCHARGE	10"	STEEL PIPE	600.0'	SEE THIS DWG. H/5 150' WEST M.P. 74.5	INACTIVE - NO FLOW # 5 & 4 TURBINE DEACTIVATED
18 CIRCULATING WATER DISCHARGE	42"	STEEL PIPE	574.92'	SEE THIS DWG. H/5 145' WEST M.P. 74.5	UNCONTAMINATED COOLING WATER CONDENSER # 4 INACTIVE - COLD RESERVE
19 CIRCULATING WATER DISCHARGE	42"	STEEL PIPE	574.92'	SEE THIS DWG. H/5 140' WEST M.P. 74.5	UNCONTAMINATED COOLING WATER CONDENSER # 3 INACTIVE - COLD RESERVE
20 CIRCULATING WATER INTAKE SCREEN WASH WATER TROUGH	20"	STEEL TROUGH	ABOVE 590.0'	SEE THIS DWG. H/5 100' WEST M.P. 74.5	THE RETURN TO THE RIVER OF THE RIVER TRASH WASHED OFF THE INTAKE SCREENS
21 CIRCULATING WATER DISCHARGE	6"	STEEL PIPE	592.0'	SEE THIS DWG. J/6 30' WEST M.P. 74.5	UNCONTAMINATED COOLING WATER FROM TRANSFORMERS
22 STORM DRAIN	18"	TILE PIPE	ABOVE 590.0'	SEE THIS DWG. M/7 500' EAST M.P. 74.5	UNCONTAMINATED STORM WATER
23 STORM DRAIN & SANITARY DRAIN	10"	TILE PIPE	ABOVE 590.0'	775' EAST M.P. 74.5	UNCONTAMINATED STORM WATER & TREATED SANITARY WASTES
24 STORM DRAIN & SANITARY DRAIN	24"	CONCRETE PIPE	590.3'	3300' WEST M.P. 74.5	UNCONTAMINATED STORM WATER & SANITARY WASTES FROM VILLAGE OF CABIN CREEK
25 STORM DRAIN & SANITARY DRAIN	24"	CONCRETE PIPE	590.3'	1600' WEST M.P. 74.5	UNCONTAMINATED STORM WATER & SANITARY WASTES FROM VILLAGE OF CABIN CREEK
26 STORM DRAIN FROM COAL PILE	24"	CORRUGATED STEEL PIPE	603.0'	1500' WEST M.P. 74.5	STORM WATER RUNOFF FROM COAL STORAGE AREA
27 STORM DRAIN FROM COAL PILE	24"	OPEN CONCRETE TROUGH	595.0'	800' WEST M.P. 74.5	STORM WATER RUNOFF FROM COAL STORAGE AREA
28 STORM DRAIN FROM COAL PILE	24"	OPEN CONCRETE TROUGH	595.0'	800' WEST M.P. 74.5	STORM WATER RUNOFF FROM COAL STORAGE AREA
29 FLOOR DRAINS & SANITARY DRAIN	6"	STEEL PIPE	ABOVE 590.0'	230' WEST M.P. 74.5	UNCONTAMINATED FLOOR DRAINS & SANITARY WASTES FROM VILLAGE OF CABIN CREEK



NO.	DATE	DESCRIPTION	APPD.
1	12/1/72	ADDED: ARMY CORPS OF ENGINEERS DISCHARGE SERIAL NO. FOR OUTFALLS H/1, H/1A, H/1B, H/1C, H/1D, H/1E, H/1F, H/1G, H/1H, H/1I, H/1J, H/1K, H/1L, H/1M, H/1N, H/1O, H/1P, H/1Q, H/1R, H/1S, H/1T, H/1U, H/1V, H/1W, H/1X, H/1Y, H/1Z, H/2, H/3, H/4, H/5, H/6, H/7, H/8, H/9, H/10, H/11, H/12, H/13, H/14, H/15, H/16, H/17, H/18, H/19, H/20, H/21, H/22, H/23, H/24, H/25, H/26, H/27, H/28, H/29, H/30, H/31, H/32, H/33, H/34, H/35, H/36, H/37, H/38, H/39, H/40, H/41, H/42, H/43, H/44, H/45, H/46, H/47, H/48, H/49, H/50, H/51, H/52, H/53, H/54, H/55, H/56, H/57, H/58, H/59, H/60, H/61, H/62, H/63, H/64, H/65, H/66, H/67, H/68, H/69, H/70, H/71, H/72, H/73, H/74, H/75, H/76, H/77, H/78, H/79, H/80, H/81, H/82, H/83, H/84, H/85, H/86, H/87, H/88, H/89, H/90, H/91, H/92, H/93, H/94, H/95, H/96, H/97, H/98, H/99, H/100, H/101, H/102, H/103, H/104, H/105, H/106, H/107, H/108, H/109, H/110, H/111, H/112, H/113, H/114, H/115, H/116, H/117, H/118, H/119, H/120, H/121, H/122, H/123, H/124, H/125, H/126, H/127, H/128, H/129, H/130, H/131, H/132, H/133, H/134, H/135, H/136, H/137, H/138, H/139, H/140, H/141, H/142, H/143, H/144, H/145, H/146, H/147, H/148, H/149, H/150, H/151, H/152, H/153, H/154, H/155, H/156, H/157, H/158, H/159, H/160, H/161, H/162, H/163, H/164, H/165, H/166, H/167, H/168, H/169, H/170, H/171, H/172, H/173, H/174, H/175, H/176, H/177, H/178, H/179, H/180, H/181, H/182, H/183, H/184, H/185, H/186, H/187, H/188, H/189, H/190, H/191, H/192, H/193, H/194, H/195, H/196, H/197, H/198, H/199, H/200, H/201, H/202, H/203, H/204, H/205, H/206, H/207, H/208, H/209, H/210, H/211, H/212, H/213, H/214, H/215, H/216, H/217, H/218, H/219, H/220, H/221, H/222, H/223, H/224, H/225, H/226, H/227, H/228, H/229, H/230, H/231, H/232, H/233, H/234, H/235, H/236, H/237, H/238, H/239, H/240, H/241, H/242, H/243, H/244, H/245, H/246, H/247, H/248, H/249, H/250, H/251, H/252, H/253, H/254, H/255, H/256, H/257, H/258, H/259, H/260, H/261, H/262, H/263, H/264, H/265, H/266, H/267, H/268, H/269, H/270, H/271, H/272, H/273, H/274, H/275, H/276, H/277, H/278, H/279, H/280, H/281, H/282, H/283, H/284, H/285, H/286, H/287, H/288, H/289, H/290, H/291, H/292, H/293, H/294, H/295, H/296, H/297, H/298, H/299, H/300, H/301, H/302, H/303, H/304, H/305, H/306, H/307, H/308, H/309, H/310, H/311, H/312, H/313, H/314, H/315, H/316, H/317, H/318, H/319, H/320, H/321, H/322, H/323, H/324, H/325, H/326, H/327, H/328, H/329, H/330, H/331, H/332, H/333, H/334, H/335, H/336, H/337, H/338, H/339, H/340, H/341, H/342, H/343, H/344, H/345, H/346, H/347, H/348, H/349, H/350, H/351, H/352, H/353, H/354, H/355, H/356, H/357, H/358, H/359, H/360, H/361, H/362, H/363, H/364, H/365, H/366, H/367, H/368, H/369, H/370, H/371, H/372, H/373, H/374, H/375, H/376, H/377, H/378, H/379, H/380, H/381, H/382, H/383, H/384, H/385, H/386, H/387, H/388, H/389, H/390, H/391, H/392, H/393, H/394, H/395, H/396, H/397, H/398, H/399, H/400, H/401, H/402, H/403, H/404, H/405, H/406, H/407, H/408, H/409, H/410, H/411, H/412, H/413, H/414, H/415, H/416, H/417, H/418, H/419, H/420, H/421, H/422, H/423, H/424, H/425, H/426, H/427, H/428, H/429, H/430, H/431, H/432, H/433, H/434, H/435, H/436, H/437, H/438, H/439, H/440, H/441, H/442, H/443, H/444, H/445, H/446, H/447, H/448, H/449, H/450, H/451, H/452, H/453, H/454, H/455, H/456, H/457, H/458, H/459, H/460, H/461, H/462, H/463, H/464, H/465, H/466, H/467, H/468, H/469, H/470, H/471, H/472, H/473, H/474, H/475, H/476, H/477, H/478, H/479, H/480, H/481, H/482, H/483, H/484, H/485, H/486, H/487, H/488, H/489, H/490, H/491, H/492, H/493, H/494, H/495, H/496, H/497, H/498, H/499, H/500, H/501, H/502, H/503, H/504, H/505, H/506, H/507, H/508, H/509, H/510, H/511, H/512, H/513, H/514, H/515, H/516, H/517, H/518, H/519, H/520, H/521, H/522, H/523, H/524, H/525, H/526, H/527, H/528, H/529, H/530, H/531, H/532, H/533, H/534, H/535, H/536, H/537, H/538, H/539, H/540, H/541, H/542, H/543, H/544, H/545, H/546, H/547, H/548, H/549, H/550, H/551, H/552, H/553, H/554, H/555, H/556, H/557, H/558, H/559, H/560, H/561, H/562, H/563, H/564, H/565, H/566, H/567, H/568, H/569, H/570, H/571, H/572, H/573, H/574, H/575, H/576, H/577, H/578, H/579, H/580, H/581, H/582, H/583, H/584, H/585, H/586, H/587, H/588, H/589, H/590, H/591, H/592, H/593, H/594, H/595, H/596, H/597, H/598, H/599, H/600, H/601, H/602, H/603, H/604, H/605, H/606, H/607, H/608, H/609, H/610, H/611, H/612, H/613, H/614, H/615, H/616, H/617, H/618, H/619, H/620, H/621, H/622, H/623, H/624, H/625, H/626, H/627, H/628, H/629, H/630, H/631, H/632, H/633, H/634, H/635, H/636, H/637, H/638, H/639, H/640, H/641, H/642, H/643, H/644, H/645, H/646, H/647, H/648, H/649, H/650, H/651, H/652, H/653, H/654, H/655, H/656, H/657, H/658, H/659, H/660, H/661, H/662, H/663, H/664, H/665, H/666, H/667, H/668, H/669, H/670, H/671, H/672, H/673, H/674, H/675, H/676, H/677, H/678, H/679, H/680, H/681, H/682, H/683, H/684, H/685, H/686, H/687, H/688, H/689, H/690, H/691, H/692, H/693, H/694, H/695, H/696, H/697, H/698, H/699, H/700, H/701, H/702, H/703, H/704, H/705, H/706, H/707, H/708, H/709, H/710, H/711, H/712, H/713, H/714, H/715, H/716, H/717, H/718, H/719, H/720, H/721, H/722, H/723, H/724, H/725, H/726, H/727, H/728, H/729, H/730, H/731, H/732, H/733, H/734, H/735, H/736, H/737, H/738, H/739, H/740, H/741, H/742, H/743, H/744, H/745, H/746, H/747, H/748, H/749, H/750, H/751, H/752, H/753, H/754, H/755, H/756, H/757, H/758, H/759, H/760, H/761, H/762, H/763, H/764, H/765, H/766, H/767, H/768, H/769, H/770, H/771, H/772, H/773, H/774, H/775, H/776, H/777, H/778, H/779, H/780, H/781, H/782, H/783, H/784, H/785, H/786, H/787, H/788, H/789, H/790, H/791, H/792, H/793, H/794, H/795, H/796, H/797, H/798, H/799, H/800, H/801, H/802, H/803, H/804, H/805, H/806, H/807, H/808, H/809, H/810, H/811, H/812, H/813, H/814, H/815, H/816, H/817, H/818, H/819, H/820, H/821, H/822, H/823, H/824, H/825, H/826, H/827, H/828, H/829, H/830, H/831, H/832, H/833, H/834, H/835, H/836, H/837, H/838, H/839, H/840, H/841, H/842, H/843, H/844, H/845, H/846, H/847, H/848, H/849, H/850, H/851, H/852, H/853, H/854, H/855, H/856, H/857, H/858, H/859, H/860, H/861, H/862, H/863, H/864, H/865, H/866, H/867, H/868, H/869, H/870, H/871, H/872, H/873, H/874, H/875, H/876, H/877, H/878, H/879, H/880, H/881, H/882, H/883, H/884, H/885, H/886, H/887, H/888, H/889, H/890, H/891, H/892, H/893, H/894, H/895, H/896, H/897, H/898, H/899, H/900, H/901, H/902, H/903, H/904, H/905, H/906, H/907, H/908, H/909, H/910, H/911, H/912, H/913, H/914, H/915, H/916, H/917, H/918, H/919, H/920, H/921, H/922, H/923, H/924, H/925, H/926, H/927, H/928, H/929, H/930, H/931, H/932, H/933, H/934, H/935, H/936, H/937, H/938, H/939, H/940, H/941, H/942, H/943, H/944, H/945, H/946, H/947, H/948, H/949, H/950, H/951, H/952, H/953, H/954, H/955, H/956, H/957, H/958, H/959, H/960, H/961, H/962, H/963, H/964, H/965, H/966, H/967, H/968, H/969, H/970, H/971, H/972, H/973, H/974, H/975, H/976, H/977, H/978, H/979, H/980, H/981, H/982, H/983, H/984, H/985, H/986, H/987, H/988, H/989, H/990, H/991, H/992, H/993, H/994, H/995, H/996, H/997, H/998, H/999, H/1000.	UWB
2	12/1/72	ADDED: SEWER DISCHARGE FROM VILLAGE H/3, H/3A, H/3B, H/3C, H/3D, H/3E, H/3F, H/3G, H/3H, H/3I, H/3J, H/3K, H/3L, H/3M, H/3N, H/3O, H/3P, H/3Q, H/3R, H/3S, H/3T, H/3U, H/3V, H/3W, H/3X, H/3Y, H/3Z, H/4, H/5, H/6, H/7, H/8, H/9, H/10, H/11, H/12, H/13, H/14, H/15, H/16, H/17, H/18, H/19, H/20, H/21, H/22, H/23, H/24, H/25, H/26, H/27, H/28, H/29, H/30, H/31, H/32, H/33, H/34, H/35, H/36, H/37, H/38, H/39, H/40, H/41, H/42, H/43, H/44, H/45, H/46, H/47, H/48, H/49, H/50, H/51, H/52, H/53, H/54, H/55, H/56, H/57, H/58, H/59, H/60, H/61, H/62, H/63, H/64, H/65, H/66, H/67, H/68, H/69, H/70, H/71, H/72, H/73, H/74, H/75, H/76, H/77, H/78, H/79, H/80, H/81, H/82, H/83, H/84, H/85, H/86, H/87, H/88, H/89, H/90, H/91, H/92, H/93, H/94, H/95, H/96, H/97, H/98, H/99, H/100, H/101, H/102, H/103, H/104, H/105, H/106, H/107, H/108, H/109, H/110, H/111, H/112, H/113, H/114, H/115, H/116, H/117, H/118, H/119, H/120, H/121, H/122, H/123, H/124, H/125, H/126, H/127, H/128, H/129, H/130, H/131, H/132, H/133, H/134, H/135, H/136, H/137, H/138, H/139, H/140, H/141, H/142, H/143, H/144, H/145, H/146, H/147, H/148, H/149, H/150, H/151, H/152, H/153, H/154, H/155, H/156, H/157, H/158, H/159, H/160, H/161, H/162, H/163, H/164, H/165, H/166, H/167, H/168, H/169, H/170, H/171, H/172, H/173, H/174, H/175, H/176, H/177, H/178, H/179, H/180, H/181, H/182, H/183, H/184, H/185, H/186, H/187, H/188, H/189, H/190, H/191, H/192, H/193, H/194, H/195, H/196, H/197, H/198, H/199, H/200, H/201, H/202, H/203, H/204, H/205, H/206, H/207, H/208, H/209, H/210, H/211, H/212, H/213, H/214, H/215, H/216, H/217, H/218, H/219, H/220, H/221, H/222, H/223, H/224, H/225, H/226, H/227, H/228, H/229, H/230, H/231, H/232, H/233, H/234, H/235, H/236, H/237, H/238, H/239, H/240, H/241, H/242, H/243, H/244, H/245, H/246, H/247, H/248, H/249, H/250, H/251, H/252, H/253, H/254, H/255, H/256, H/257, H/258, H/259, H/260, H/261, H/262, H/263, H/264, H/265, H/266, H/267, H/268, H/269, H/270, H/271, H/272, H/273, H/274, H/275, H/276, H/277, H/278, H/279, H/280, H/281, H/282, H/283, H/284, H/285, H/286, H/287, H/288, H/289, H/290, H/291, H/292, H/293, H/294, H/295, H/296, H/297, H/298, H/299, H/300, H/301, H/302, H/303, H/304, H/305, H/306, H/307, H/308, H/309, H/310, H/311, H/312, H/313, H/314, H/315, H/316, H/317, H/318, H/319, H/320, H/321, H/322, H/323, H/324, H/325, H/326, H/327, H/328, H/329, H/330, H/331, H/332, H/333, H/334, H/335, H/336, H/337, H/338, H/339, H/340, H/341, H/342, H/343, H/344, H/345, H/346, H/347, H/348, H/349, H/350, H/351, H/352, H/353, H/354, H/355, H/356, H/357, H/358, H/359, H/360, H/361, H/362, H/363, H/364, H/365, H/366, H/367, H/368, H/369, H/370, H/371, H/372, H/373, H/374, H/375,	



1933  
Surface of Reser Elevation 579.2  
Normal Pool Elevation 577.9  
View upstream along left bank of Kanawha River from  
as shown at the mouth of Cabin Creek



KANAWHA RIVER

KANAWHA

CABIN CREEK ISLAND

CHELYAN

HIGH

WATER

CHANNEL

New Marine Pool Pl. 530

C.W. Hastings  
175' 15"  
3109


3114

NOTES:  
ALL ELEVATIONS ON U.S.G.S. SANDY MOUNT DATUM.  
CONTOUR DATA FROM ORIGINAL BENCH MARKS IN  
U.S. ENGINEER OFFICE CHARLESTON, W. VA. SURVEY MADE  
OCT 1931 - FEB 1932.  
SURVEY LINE MARKED 'Y' RUN BY U.S. ARMY ENGINEERS  
SURVEY LINE MARKED 'T' RUN BY C.A. TAYLOR CO. ENG.  
SURVEY LINE MARKED 'D' PLOTTED FROM DEED

**APPENDIX B**

**Site Reconnaissance Photo Log**



	Project Name: AEP Cabin Creek	
	Project Location: Cabin Creek Ash Pond, Former Cabin Creek Power Plant, Cabin Creek, WV	
	Client: AEP	Project Code: US0041868.3924
	Preparer: Naveen Kumar Ganji	Reviewer: Steven Moeller
	Report Date: 2025-12-08	Page Number: 1 of 28



Media 1: Road adjacent to the ash pond

Media 2: Drainage pipe from the former power plant area

Latitude: 38.1979  
 Longitude: -81.4823  
 Bearing: W

Weather: Patchy light rain with thunder  
 Date Taken: 07/16/2025  
 Taken By: Naveen Kumar Ganji

Latitude: 38.1982  
 Longitude: -81.4822  
 Bearing: SE

Weather: Patchy light rain with thunder  
 Date Taken: 07/16/2025  
 Taken By: Naveen Kumar Ganji

Tags: NA

Tags: NA



Project Name: AEP Cabin Creek

Project Location: Cabin Creek Ash Pond, Former Cabin Creek Power Plant, Cabin Creek, WV

Client: AEP

Project Code: US0041868.3924

Preparer: Naveen Kumar Ganji

Reviewer: Steven Moeller

Report Date: 2025-12-08

Page Number: 2 of 28



Media 3: Potential drainage outlet pipe at the downstream toe of the perimeter dike

Media 4: Drainage way near perimeter dike

Latitude: 38.1982  
 Longitude: -81.4823  
 Bearing: SW

Weather: Patchy light rain with  
 thunder  
 Date Taken: 07/16/2025  
 Taken By: Naveen Kumar Ganji

Latitude: 38.1984  
 Longitude: -81.4826  
 Bearing: NW

Weather: Patchy light rain with  
 thunder  
 Date Taken: 07/16/2025  
 Taken By: Naveen Kumar Ganji

Tags: NA

Tags: NA



Project Name: AEP Cabin Creek

Project Location: Cabin Creek Ash Pond, Former Cabin Creek Power Plant, Cabin Creek, WV

Client: AEP

Project Code: US0041868.3924

Preparer: Naveen Kumar Ganji

Reviewer: Steven Moeller

Report Date: 2025-12-08

Page Number: 3 of 28



Media 5: Floodplain area located to the east of the ash pond near the perimeter dike toe of slope

Media 6: Floodplain area located to the east of the ash pond near the perimeter dike toe of slope

Latitude: 38.1986  
 Longitude: -81.4828  
 Bearing: NW

Weather: Patchy light rain with thunder  
 Date Taken: 07/16/2025  
 Taken By: Naveen Kumar Ganji

Latitude: 38.1987  
 Longitude: -81.4829  
 Bearing: SE

Weather: Patchy light rain with thunder  
 Date Taken: 07/16/2025  
 Taken By: Naveen Kumar Ganji

Tags: NA

Tags: NA



Project Name: AEP Cabin Creek

Project Location: Cabin Creek Ash Pond, Former Cabin Creek Power Plant, Cabin Creek, WV

Client: AEP

Project Code: US0041868.3924

Preparer: Naveen Kumar Ganji

Reviewer: Steven Moeller

Report Date: 2025-12-08

Page Number: 4 of 28



Media 7: Perimeter dike at the northeast corner of the ash pond

Media 8: Erosion control measures on perimeter dike

Latitude: 38.1988  
 Longitude: -81.4831  
 Bearing: SW

Weather: Patchy light rain with  
 thunder  
 Date Taken: 07/16/2025  
 Taken By: Naveen Kumar Ganji

Latitude: 38.1988  
 Longitude: -81.4832  
 Bearing: SW

Weather: Patchy light rain with  
 thunder  
 Date Taken: 07/16/2025  
 Taken By: Naveen Kumar Ganji

Tags: NA

Tags: NA



Project Name: AEP Cabin Creek

Project Location: Cabin Creek Ash Pond, Former Cabin Creek Power Plant, Cabin Creek, WV

Client: AEP

Project Code: US0041868.3924

Preparer: Naveen Kumar Ganji

Reviewer: Steven Moeller

Report Date: 2025-12-08

Page Number: 5 of 28



Media 9: Erosion control measures on perimeter dike

Media 10: Access road on the north side of the ash pond (top of ash pond)

Latitude: 38.1987  
 Longitude: -81.4833  
 Bearing: W

Weather: Patchy light rain with  
 thunder  
 Date Taken: 07/16/2025  
 Taken By: Naveen Kumar Ganji

Latitude: 38.1987  
 Longitude: -81.4834  
 Bearing: NW

Weather: Patchy light rain with  
 thunder  
 Date Taken: 07/16/2025  
 Taken By: Naveen Kumar Ganji

Tags: NA

Tags: NA



Project Name: AEP Cabin Creek

Project Location: Cabin Creek Ash Pond, Former Cabin Creek Power Plant, Cabin Creek, WV

Client: AEP

Project Code: US0041868.3924

Preparer: Naveen Kumar Ganji

Reviewer: Steven Moeller

Report Date: 2025-12-08

Page Number: 6 of 28



Media 11: Top of ash pond looking from north to south

Media 12: Top of ash pond looking southwest

Latitude: 38.1986  
 Longitude: -81.4835  
 Bearing: S

Weather: Patchy light rain with  
 thunder  
 Date Taken: 07/16/2025  
 Taken By: Naveen Kumar Ganji

Latitude: 38.1986  
 Longitude: -81.4844  
 Bearing: SW

Weather: Patchy light rain with  
 thunder  
 Date Taken: 07/16/2025  
 Taken By: Naveen Kumar Ganji

Tags: NA

Tags: NA



Project Name: AEP Cabin Creek

Project Location: Cabin Creek Ash Pond, Former Cabin Creek Power Plant, Cabin Creek, WV

Client: AEP

Project Code: US0041868.3924

Preparer: Naveen Kumar Ganji

Reviewer: Steven Moeller

Report Date: 2025-12-08

Page Number: 7 of 28



Media 13: Access road along the north side of the ash pond (top of ash pond)

Media 14: Access road along north side of ash pond (top of ash pond)

Latitude: 38.1987  
 Longitude: -81.4845  
 Bearing: W

Weather: Patchy light rain with  
 thunder  
 Date Taken: 07/16/2025  
 Taken By: Naveen Kumar Ganji

Latitude: 38.1986  
 Longitude: -81.4850  
 Bearing: W

Weather: Patchy light rain with  
 thunder  
 Date Taken: 07/16/2025  
 Taken By: Naveen Kumar Ganji

Tags: NA

Tags: NA



Project Name: AEP Cabin Creek

Project Location: Cabin Creek Ash Pond, Former Cabin Creek Power Plant, Cabin Creek, WV

Client: AEP

Project Code: US0041868.3924

Preparer: Naveen Kumar Ganji

Reviewer: Steven Moeller

Report Date: 2025-12-08

Page Number: 8 of 28



Media 15: Looking north towards the Kanawha River down the perimeter dike (heavy vegetation)

Media 16: Top of ash pond looking from north to south

Latitude: 38.1986  
 Longitude: -81.4855  
 Bearing: N

Weather: Patchy light rain with  
 thunder  
 Date Taken: 07/16/2025  
 Taken By: Naveen Kumar Ganji

Latitude: 38.1984  
 Longitude: -81.4859  
 Bearing: S

Weather: Patchy light rain with  
 thunder  
 Date Taken: 07/16/2025  
 Taken By: Naveen Kumar Ganji

Tags: NA

Tags: NA



Project Name: AEP Cabin Creek

Project Location: Cabin Creek Ash Pond, Former Cabin Creek Power Plant, Cabin Creek, WV

Client: AEP

Project Code: US0041868.3924

Preparer: Naveen Kumar Ganji

Reviewer: Steven Moeller

Report Date: 2025-12-08

Page Number: 9 of 28



Media 17: Looking north towards the Kanawha River down the perimeter dike (heavy vegetation)

Media 18: Looking north towards the Kanawha River down the perimeter dike (heavy vegetation)

Latitude: 38.1985  
 Longitude: -81.4862  
 Bearing: NW

Weather: Patchy light rain with thunder  
 Date Taken: 07/16/2025  
 Taken By: Naveen Kumar Ganji

Latitude: 38.1983  
 Longitude: -81.4867  
 Bearing: NW

Weather: Patchy light rain with thunder  
 Date Taken: 07/16/2025  
 Taken By: Naveen Kumar Ganji

Tags: NA

Tags: NA



Project Name: AEP Cabin Creek

Project Location: Cabin Creek Ash Pond, Former Cabin Creek Power Plant, Cabin Creek, WV

Client: AEP

Project Code: US0041868.3924

Preparer: Naveen Kumar Ganji

Reviewer: Steven Moeller

Report Date: 2025-12-08

Page Number: 10 of 28



Media 19: Access road along the north side of the ash pond (top of ash pond)

Media 20: Top of ash pond looking from north to south

Latitude: 38.1982  
 Longitude: -81.4868  
 Bearing: W

Weather: Patchy light rain with  
 thunder  
 Date Taken: 07/16/2025  
 Taken By: Naveen Kumar Ganji

Latitude: 38.1981  
 Longitude: -81.4872  
 Bearing: SE

Weather: Patchy light rain with  
 thunder  
 Date Taken: 07/16/2025  
 Taken By: Naveen Kumar Ganji

Tags: NA

Tags: NA



Project Name: AEP Cabin Creek

Project Location: Cabin Creek Ash Pond, Former Cabin Creek Power Plant, Cabin Creek, WV

Client: AEP

Project Code: US0041868.3924

Preparer: Naveen Kumar Ganji

Reviewer: Steven Moeller

Report Date: 2025-12-08

Page Number: 11 of 28



Media 21: Access road along the north side of the ash pond (top of ash pond)

Media 22: Looking up the perimeter dike slope from the Kanawha River (heavy vegetation)

Latitude: 38.1980  
 Longitude: -81.4876  
 Bearing: W

Weather: Patchy light rain with  
 thunder  
 Date Taken: 07/16/2025  
 Taken By: Naveen Kumar Ganji

Latitude: 38.1983  
 Longitude: -81.4874  
 Bearing: S

Weather: Patchy light rain with  
 thunder  
 Date Taken: 07/16/2025  
 Taken By: Naveen Kumar Ganji

Tags: NA

Tags: NA



Project Name: AEP Cabin Creek

Project Location: Cabin Creek Ash Pond, Former Cabin Creek Power Plant, Cabin Creek, WV

Client: AEP

Project Code: US0041868.3924

Preparer: Naveen Kumar Ganji

Reviewer: Steven Moeller

Report Date: 2025-12-08

Page Number: 12 of 28



Media 23: Perimeter dike at the northwest end of the ash pond

Media 24: Heavy vegetation is shown on the perimeter dike at the northwest end of the ash pond adjacent to the Kanawha River

Latitude: 38.1982  
 Longitude: -81.4877  
 Bearing: S

Weather: Patchy light rain with  
 thunder  
 Date Taken: 07/16/2025  
 Taken By: Naveen Kumar Ganji

Latitude: 38.1982  
 Longitude: -81.4877  
 Bearing: S

Weather: Patchy light rain with  
 thunder  
 Date Taken: 07/16/2025  
 Taken By: Naveen Kumar Ganji

Tags: NA

Tags: NA



Project Name: AEP Cabin Creek

Project Location: Cabin Creek Ash Pond, Former Cabin Creek Power Plant, Cabin Creek, WV

Client: AEP

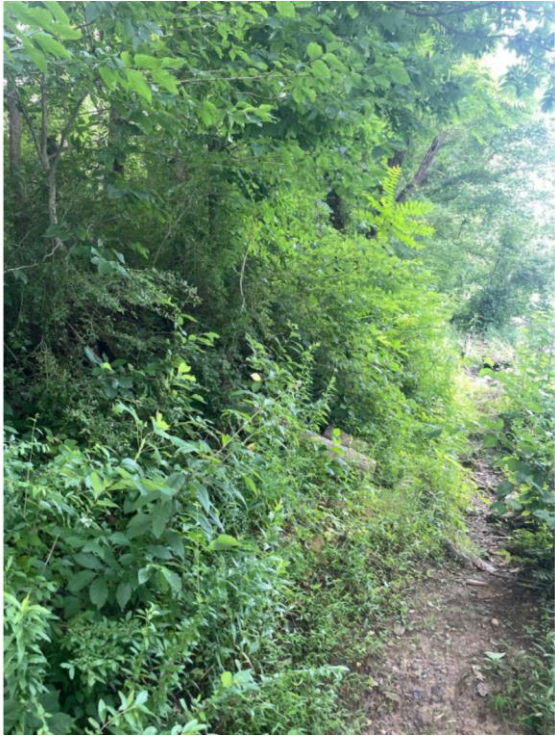
Project Code: US0041868.3924

Preparer: Naveen Kumar Ganji

Reviewer: Steven Moeller

Report Date: 2025-12-08

Page Number: 13 of 28



Media 25: Heavy vegetation shown on the perimeter dike at the northwest end of the ash pond adjacent to the Kanawha River

Media 26: Floodplain area shown to the northwest of the ash pond

Latitude: 38.1982  
 Longitude: -81.4877  
 Bearing: SW

Weather: Patchy light rain with  
 thunder  
 Date Taken: 07/16/2025  
 Taken By: Naveen Kumar Ganji

Latitude: 38.1979  
 Longitude: -81.4886  
 Bearing: W

Weather: Patchy light rain with  
 thunder  
 Date Taken: 07/16/2025  
 Taken By: Naveen Kumar Ganji

Tags: NA

Tags: NA



Project Name: AEP Cabin Creek

Project Location: Cabin Creek Ash Pond, Former Cabin Creek Power Plant, Cabin Creek, WV

Client: AEP

Project Code: US0041868.3924

Preparer: Naveen Kumar Ganji

Reviewer: Steven Moeller

Report Date: 2025-12-08

Page Number: 14 of 28



Media 27: Corrugated metal storm water pipe by the concrete outlet pipe



Media 28: Concrete spillway outlet pipe

Latitude: 38.1979  
 Longitude: -81.4884  
 Bearing: E

Weather: Patchy light rain with  
 thunder  
 Date Taken: 07/16/2025  
 Taken By: Naveen Kumar Ganji

Latitude: 38.1979  
 Longitude: -81.4884  
 Bearing: W

Weather: Patchy light rain with  
 thunder  
 Date Taken: 07/16/2025  
 Taken By: Naveen Kumar Ganji

Tags: NA

Tags: NA



Project Name: AEP Cabin Creek

Project Location: Cabin Creek Ash Pond, Former Cabin Creek Power Plant, Cabin Creek, WV

Client: AEP

Project Code: US0041868.3924

Preparer: Naveen Kumar Ganji

Reviewer: Steven Moeller

Report Date: 2025-12-08

Page Number: 15 of 28



Media 29: Corrugated metal storm drain outlet

Media 30: View of perimeter dike adjacent to the Kanawha River

Latitude: 38.1979  
 Longitude: -81.4884  
 Bearing: SW

Weather: Patchy light rain with  
 thunder  
 Date Taken: 07/16/2025  
 Taken By: Naveen Kumar Ganji

Latitude: 38.1979  
 Longitude: -81.4884  
 Bearing: NE

Weather: Patchy light rain with  
 thunder  
 Date Taken: 07/16/2025  
 Taken By: Naveen Kumar Ganji

Tags: NA

Tags: NA



Project Name: AEP Cabin Creek

Project Location: Cabin Creek Ash Pond, Former Cabin Creek Power Plant, Cabin Creek, WV

Client: AEP

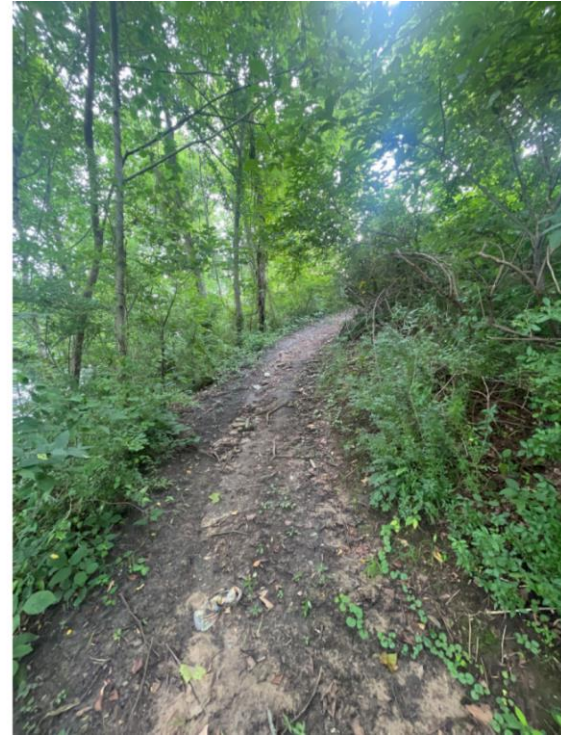
Project Code: US0041868.3924

Preparer: Naveen Kumar Ganji

Reviewer: Steven Moeller

Report Date: 2025-12-08

Page Number: 16 of 28



Media 31: Floodplain area adjacent to the ash pond (northwest end of ash pond)

Media 32: ATV trail on perimeter dike at the northwest end of the ash pond

Latitude: 38.1980  
 Longitude: -81.4882  
 Bearing: NW

Weather: Patchy light rain with  
 thunder  
 Date Taken: 07/16/2025  
 Taken By: Naveen Kumar Ganji

Latitude: 38.1980  
 Longitude: -81.4882  
 Bearing: E

Weather: Patchy light rain with  
 thunder  
 Date Taken: 07/16/2025  
 Taken By: Naveen Kumar Ganji

Tags: NA

Tags: NA



Project Name: AEP Cabin Creek

Project Location: Cabin Creek Ash Pond, Former Cabin Creek Power Plant, Cabin Creek, WV

Client: AEP

Project Code: US0041868.3924

Preparer: Naveen Kumar Ganji

Reviewer: Steven Moeller

Report Date: 2025-12-08

Page Number: 17 of 28



Media 33: Perimeter dike at the northwest end of the ash pond



Media 34: Remnants of old concrete outlet structure used when the ash pond was active

Latitude: 38.1979  
 Longitude: -81.4880  
 Bearing: NW

Weather: Patchy light rain with  
 thunder  
 Date Taken: 07/16/2025  
 Taken By: Naveen Kumar Ganji

Tags: NA

Latitude: 38.1979  
 Longitude: -81.4878  
 Bearing: NE

Weather: Patchy light rain with  
 thunder  
 Date Taken: 07/16/2025  
 Taken By: Naveen Kumar Ganji

Tags: NA



Project Name: AEP Cabin Creek

Project Location: Cabin Creek Ash Pond, Former Cabin Creek Power Plant, Cabin Creek, WV

Client: AEP

Project Code: US0041868.3924

Preparer: Naveen Kumar Ganji

Reviewer: Steven Moeller

Report Date: 2025-12-08

Page Number: 18 of 28



Media 35: Remnants of an old concrete outlet structure used when the ash pond was active



Media 36: Cleared area on the top of the ash pond with in-place erosion control measures (recently cleared)

Latitude: 38.1979  
 Longitude: -81.4878  
 Bearing: NE

Weather: Patchy light rain with thunder  
 Date Taken: 07/16/2025  
 Taken By: Naveen Kumar Ganji

Latitude: 38.1979  
 Longitude: -81.4878  
 Bearing: NW

Weather: Patchy light rain with thunder  
 Date Taken: 07/16/2025  
 Taken By: Naveen Kumar Ganji

Tags: NA

Tags: NA



Project Name: AEP Cabin Creek	
Project Location: Cabin Creek Ash Pond, Former Cabin Creek Power Plant, Cabin Creek, WV	
Client: AEP	Project Code: US0041868.3924
Preparer: Naveen Kumar Ganji	Reviewer: Steven Moeller
Report Date: 2025-12-08	Page Number: 19 of 28



Media 37: Top of ash pond near the northwest corner of the pond

Media 38: Looking west to east on top of the ash pond (area recently cleared)

Latitude: 38.1976  
 Longitude: -81.4877  
 Bearing: SW

Weather: Patchy light rain with  
 thunder  
 Date Taken: 07/16/2025  
 Taken By: Naveen Kumar Ganji

Latitude: 38.1976  
 Longitude: -81.4877  
 Bearing: NE

Weather: Patchy light rain with  
 thunder  
 Date Taken: 07/16/2025  
 Taken By: Naveen Kumar Ganji

Tags: NA

Tags: NA



Project Name: AEP Cabin Creek

Project Location: Cabin Creek Ash Pond, Former Cabin Creek Power Plant, Cabin Creek, WV

Client: AEP

Project Code: US0041868.3924

Preparer: Naveen Kumar Ganji

Reviewer: Steven Moeller

Report Date: 2025-12-08

Page Number: 20 of 28



Media 39: Looking northwest across the top of the ash pond towards the Kanawha River

Media 40: Looking northeast across the top of the ash pond

Latitude: 38.1973  
 Longitude: -81.4872  
 Bearing: W

Weather: Patchy light rain with thunder  
 Date Taken: 07/16/2025  
 Taken By: Naveen Kumar Ganji

Latitude: 38.1973  
 Longitude: -81.4872  
 Bearing: NE

Weather: Patchy light rain with thunder  
 Date Taken: 07/16/2025  
 Taken By: Naveen Kumar Ganji

Tags: NA

Tags: NA



Project Name: AEP Cabin Creek

Project Location: Cabin Creek Ash Pond, Former Cabin Creek Power Plant, Cabin Creek, WV

Client: AEP

Project Code: US0041868.3924

Preparer: Naveen Kumar Ganji

Reviewer: Steven Moeller

Report Date: 2025-12-08

Page Number: 21 of 28



Media 41: Looking southeast across the top of the ash pond towards the neighborhood to the south

Latitude: 38.1973  
 Longitude: -81.4872  
 Bearing: SE

Weather: Patchy light rain with thunder  
 Date Taken: 07/16/2025  
 Taken By: Naveen Kumar Ganji

Tags: NA



Media 42: Top of concrete stormwater manhole. Access point for stormwater drainage pipes that traverse the ash pond

Latitude: 38.1970  
 Longitude: -81.4868  
 Bearing: S

Weather: Patchy light rain with thunder  
 Date Taken: 07/16/2025  
 Taken By: Naveen Kumar Ganji

Tags: NA



Project Name: AEP Cabin Creek

Project Location: Cabin Creek Ash Pond, Former Cabin Creek Power Plant, Cabin Creek, WV

Client: AEP

Project Code: US0041868.3924

Preparer: Naveen Kumar Ganji

Reviewer: Steven Moeller

Report Date: 2025-12-08

Page Number: 22 of 28



Media 43: Top of concrete stormwater manhole. Access point for stormwater drainage pipes that traverse the ash pond

Media 44: Top of concrete stormwater manhole. Access point for stormwater drainage pipes that traverse the ash pond

Latitude: 38.1970  
 Longitude: -81.4868  
 Bearing: SW

Weather: Patchy light rain with thunder  
 Date Taken: 07/16/2025  
 Taken By: Naveen Kumar Ganji

Latitude: 38.1969  
 Longitude: -81.4869  
 Bearing: NE

Weather: Patchy light rain with thunder  
 Date Taken: 07/16/2025  
 Taken By: Naveen Kumar Ganji

Tags: NA

Tags: NA



Project Name: AEP Cabin Creek

Project Location: Cabin Creek Ash Pond, Former Cabin Creek Power Plant, Cabin Creek, WV

Client: AEP

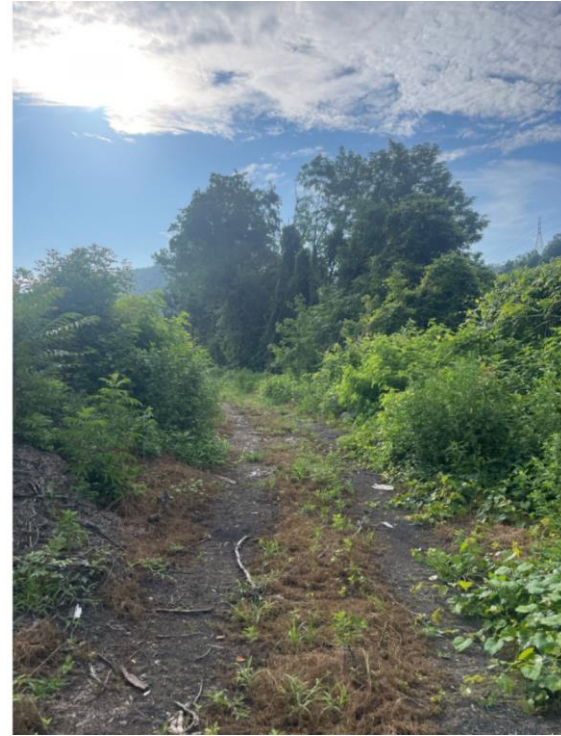
Project Code: US0041868.3924

Preparer: Naveen Kumar Ganji

Reviewer: Steven Moeller

Report Date: 2025-12-08

Page Number: 23 of 28



Media 45: Looking towards the northeast across the top of the ash pond (area recently cleared)

Media 46: Looking east along the top of the perimeter dike south of the ash pond

Latitude: 38.1969  
 Longitude: -81.4867  
 Bearing: N

Weather: Patchy light rain with thunder  
 Date Taken: 07/16/2025  
 Taken By: Naveen Kumar Ganji

Latitude: 38.1969  
 Longitude: -81.4865  
 Bearing: E

Weather: Patchy light rain with thunder  
 Date Taken: 07/16/2025  
 Taken By: Naveen Kumar Ganji

Tags: NA

Tags: NA



Project Name: AEP Cabin Creek

Project Location: Cabin Creek Ash Pond, Former Cabin Creek Power Plant, Cabin Creek, WV

Client: AEP

Project Code: US0041868.3924

Preparer: Naveen Kumar Ganji

Reviewer: Steven Moeller

Report Date: 2025-12-08

Page Number: 24 of 28



Media 47: Looking west along the top of the perimeter dike south of the ash pond

Media 48: Looking west along the top of the perimeter dike south of the ash pond

Latitude: 38.1968  
 Longitude: -81.4858  
 Bearing: W

Weather: Patchy light rain with  
 thunder  
 Date Taken: 07/16/2025  
 Taken By: Naveen Kumar Ganji

Latitude: 38.1968  
 Longitude: -81.4852  
 Bearing: W

Weather: Patchy light rain with  
 thunder  
 Date Taken: 07/16/2025  
 Taken By: Naveen Kumar Ganji

Tags: NA

Tags: NA



Project Name: AEP Cabin Creek

Project Location: Cabin Creek Ash Pond, Former Cabin Creek Power Plant, Cabin Creek, WV

Client: AEP

Project Code: US0041868.3924

Preparer: Naveen Kumar Ganji

Reviewer: Steven Moeller

Report Date: 2025-12-08

Page Number: 25 of 28



Media 49: Looking east along the top of the perimeter dike south of the ash pond

Media 50: Looking south from the top of the perimeter dike, showing manhole location in the adjacent street

Latitude: 38.1969  
 Longitude: -81.4846  
 Bearing: E

Weather: Patchy light rain with  
 thunder  
 Date Taken: 07/16/2025  
 Taken By: Naveen Kumar Ganji

Latitude: 38.1974  
 Longitude: -81.4831  
 Bearing: SE

Weather: Patchy light rain with  
 thunder  
 Date Taken: 07/16/2025  
 Taken By: Naveen Kumar Ganji

Tags: NA

Tags: NA



Project Name: AEP Cabin Creek

Project Location: Cabin Creek Ash Pond, Former Cabin Creek Power Plant, Cabin Creek, WV

Client: AEP

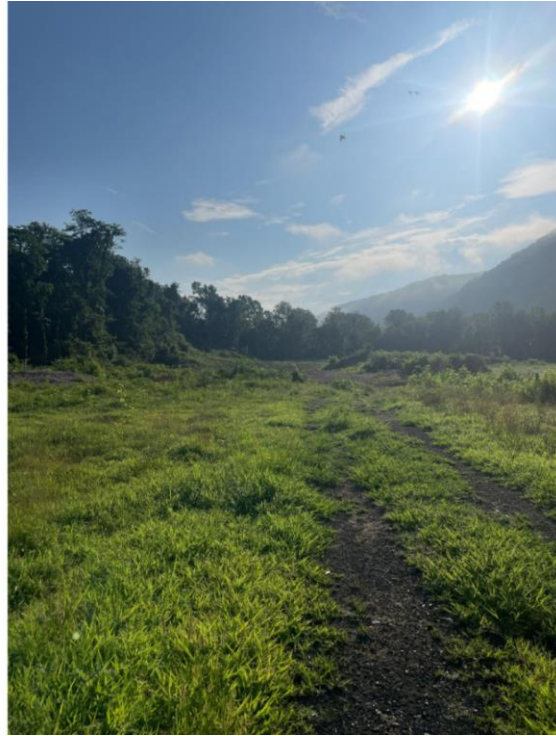
Project Code: US0041868.3924

Preparer: Naveen Kumar Ganji

Reviewer: Steven Moeller

Report Date: 2025-12-08

Page Number: 26 of 28



Media 51: Splitter dike running through the middle of the ash pond

Media 52: Looking west on the south side of the ash pond

Latitude: 38.1974  
 Longitude: -81.4830  
 Bearing: NW

Weather: Patchy light rain with  
 thunder  
 Date Taken: 07/16/2025  
 Taken By: Naveen Kumar Ganji

Latitude: 38.1975  
 Longitude: -81.4828  
 Bearing: NE

Weather: Patchy light rain with  
 thunder  
 Date Taken: 07/16/2025  
 Taken By: Naveen Kumar Ganji

Tags: NA

Tags: NA



Project Name: AEP Cabin Creek

Project Location: Cabin Creek Ash Pond, Former Cabin Creek Power Plant, Cabin Creek, WV

Client: AEP

Project Code: US0041868.3924

Preparer: Naveen Kumar Ganji

Reviewer: Steven Moeller

Report Date: 2025-12-08

Page Number: 27 of 28



Media 53: South side of ash pond on top of perimeter dike looking west

Latitude: 38.1974  
Longitude: -81.4829  
Bearing: SW

Weather: Patchy light rain with thunder  
Date Taken: 07/16/2025  
Taken By: Naveen Kumar Ganji

Tags: NA



Project Name: AEP Cabin Creek

Project Location: Cabin Creek Ash Pond, Former Cabin Creek Power Plant, Cabin Creek, WV

Client: AEP

Project Code: US0041868.3924

Preparer: Naveen Kumar Ganji

Reviewer: Steven Moeller

Report Date: 2025-12-08

Page Number: 28 of 28

**wsp**

**wsp.com**